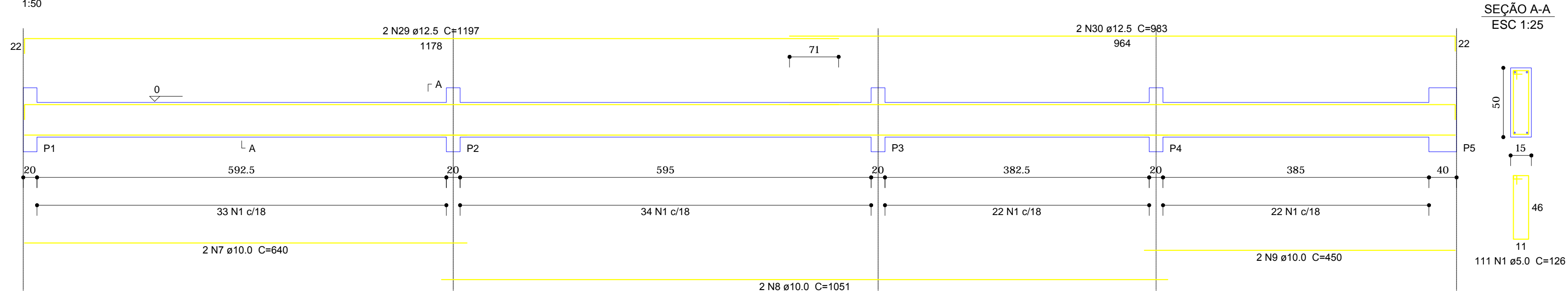
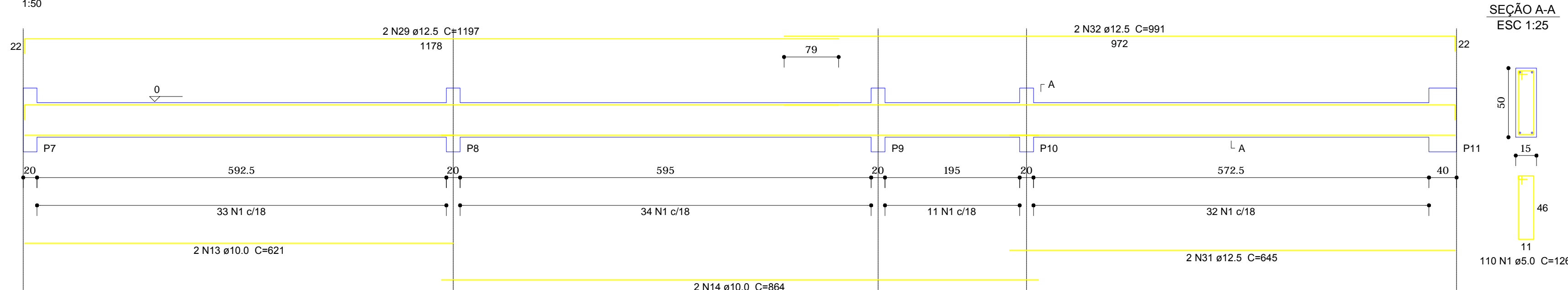


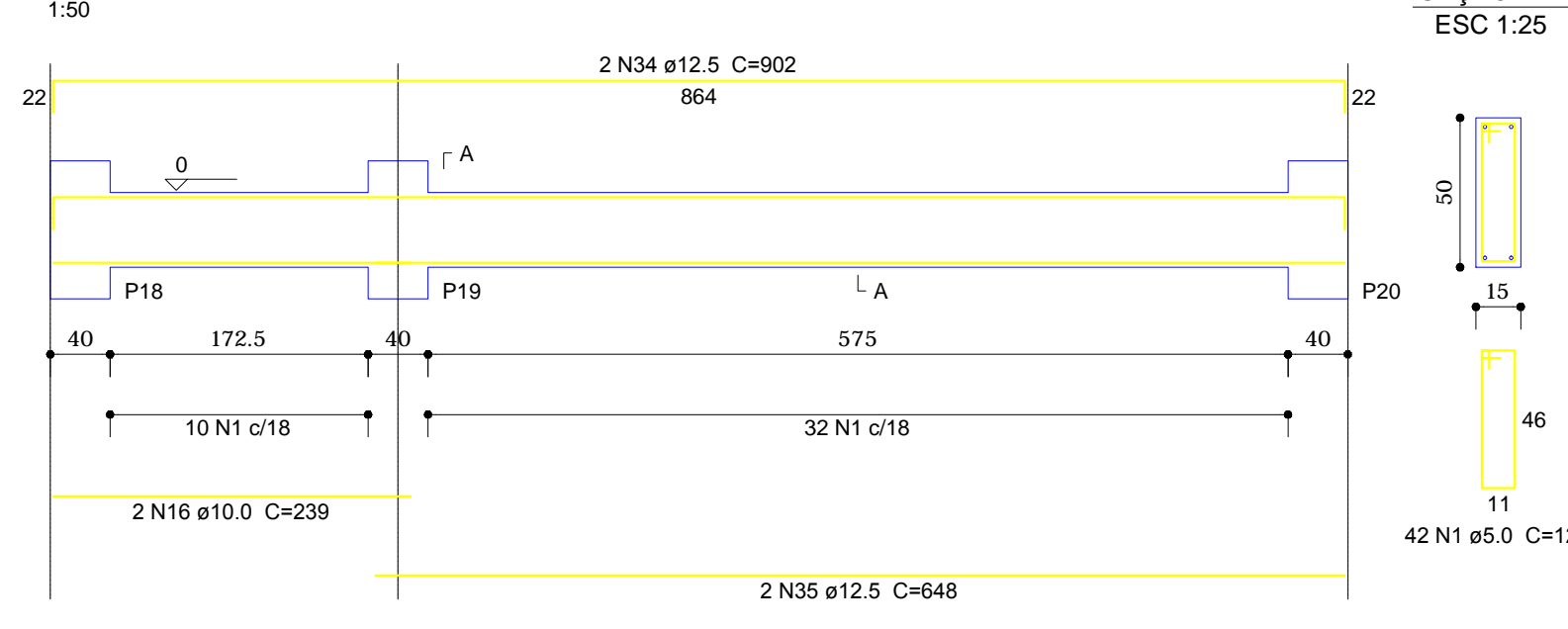
V1  
1:50



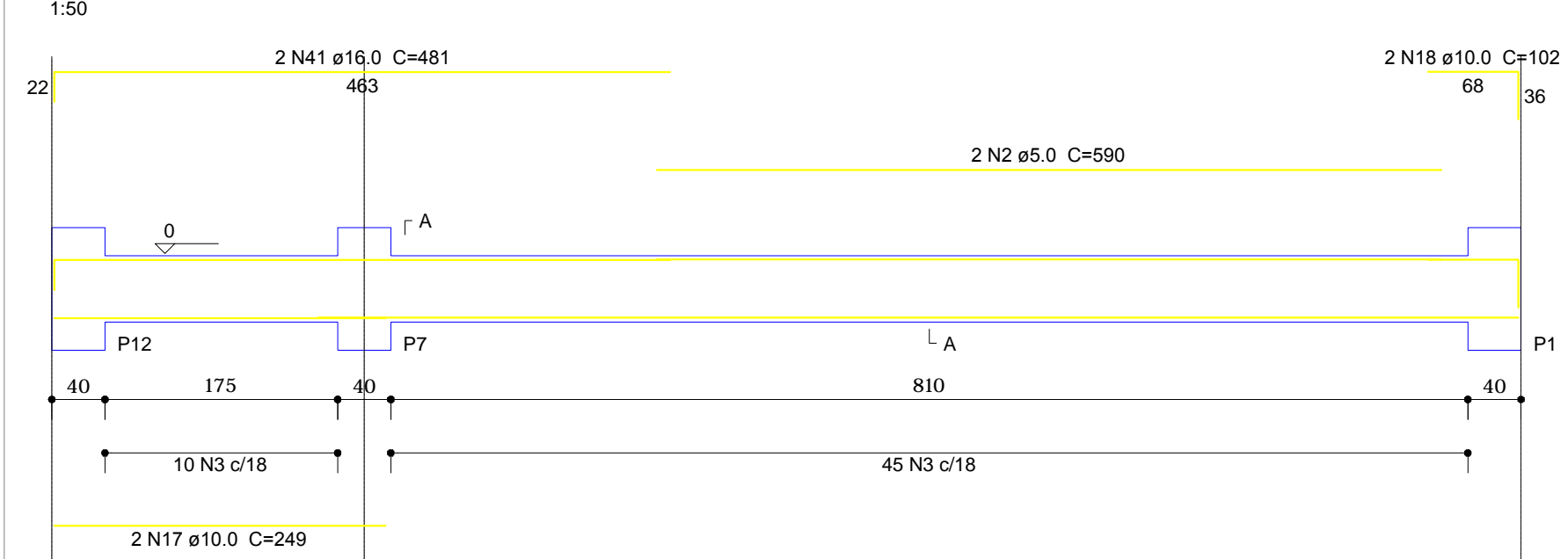
V2  
1:50



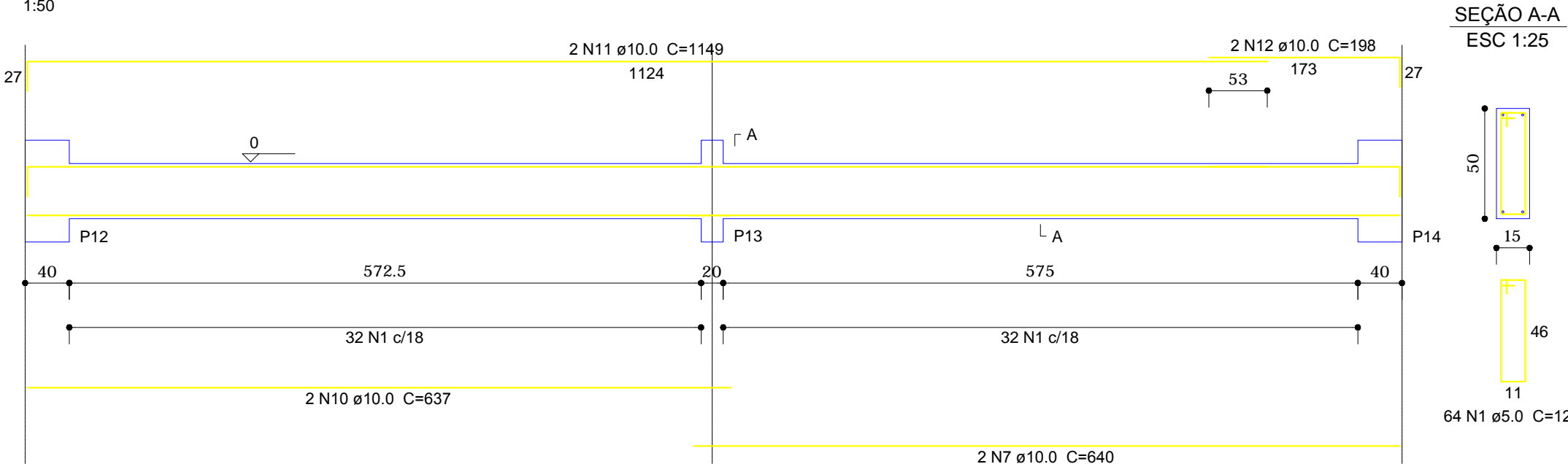
V5  
1:50



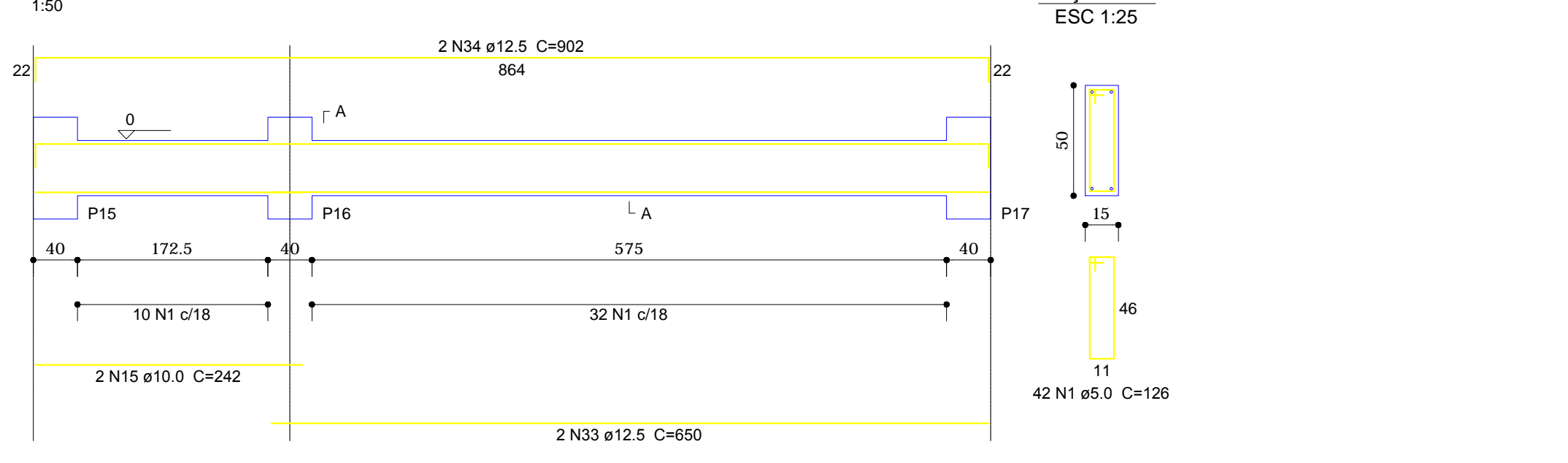
V6  
1:50



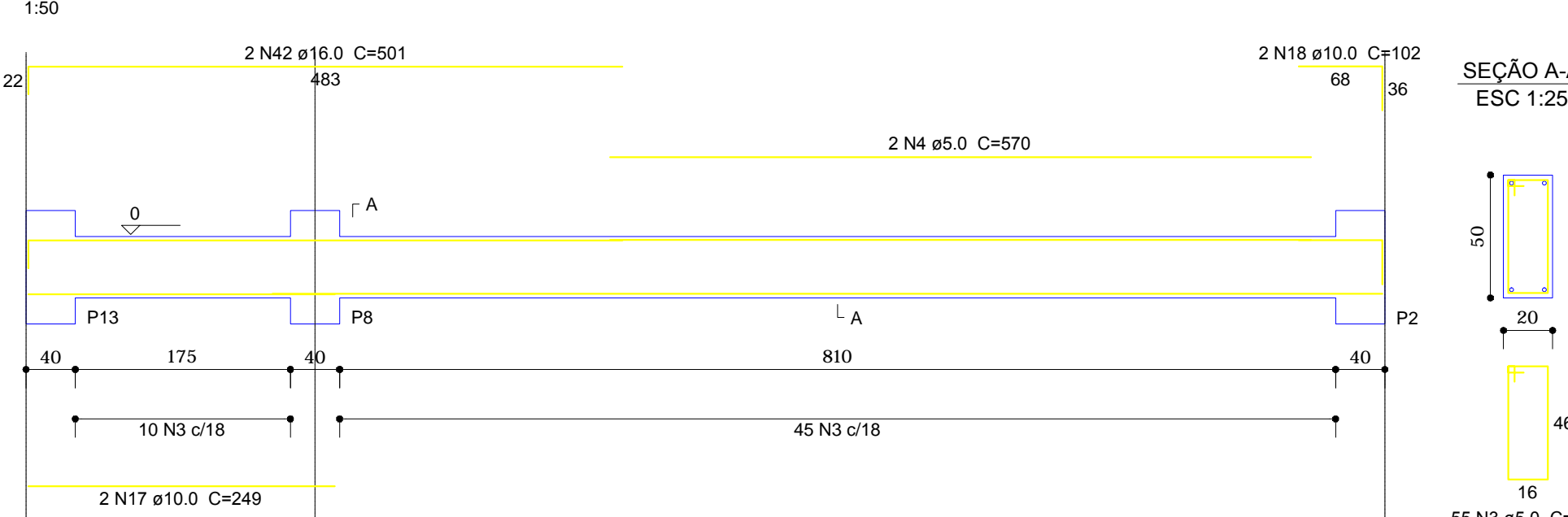
V3  
1:50



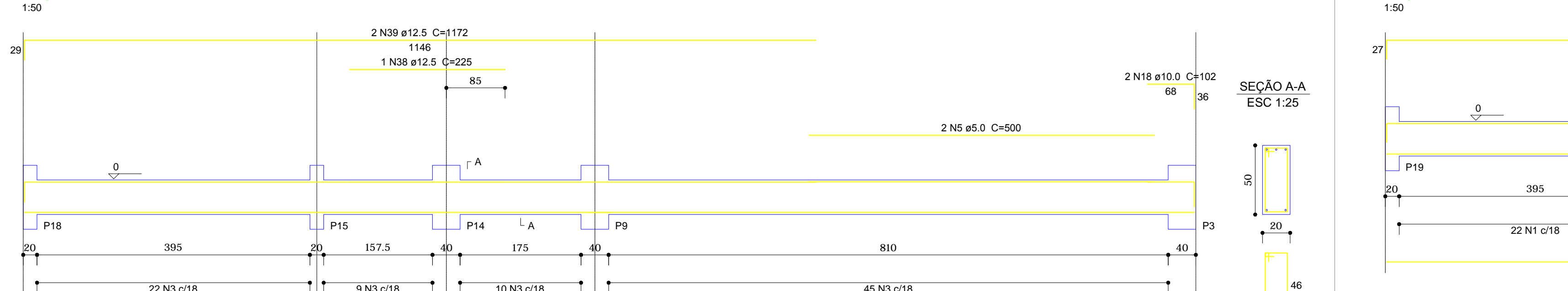
V4  
1:50



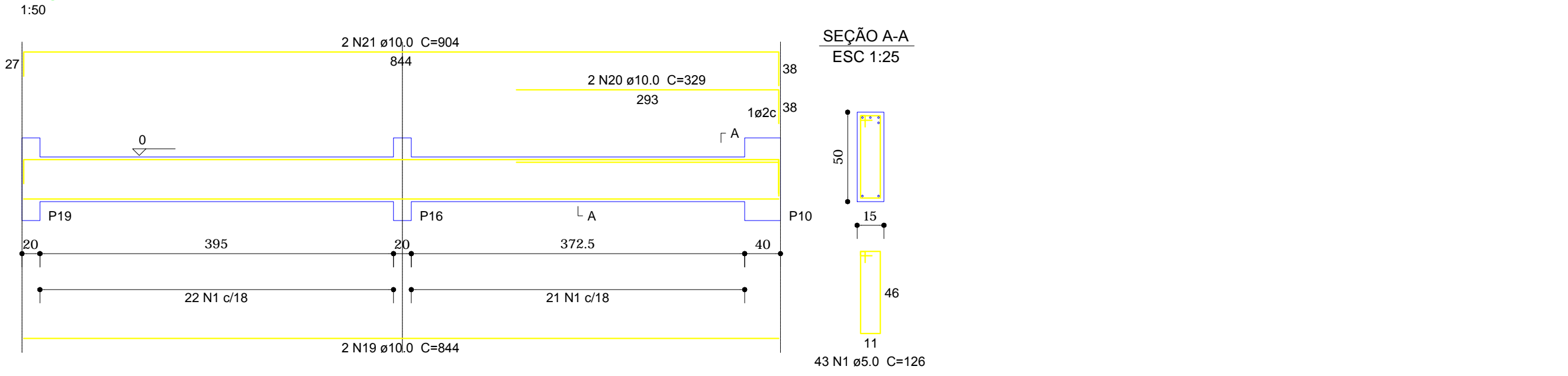
V7  
1:50



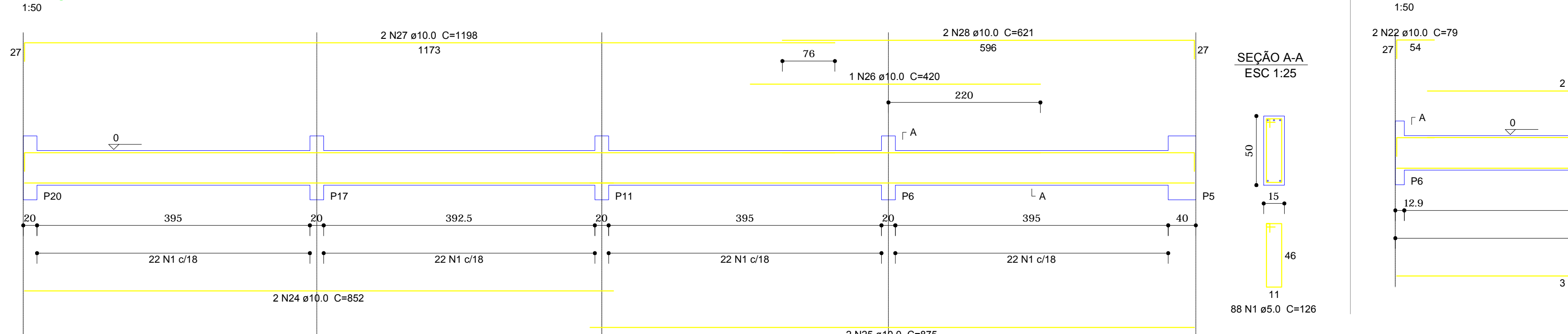
V8  
1:50



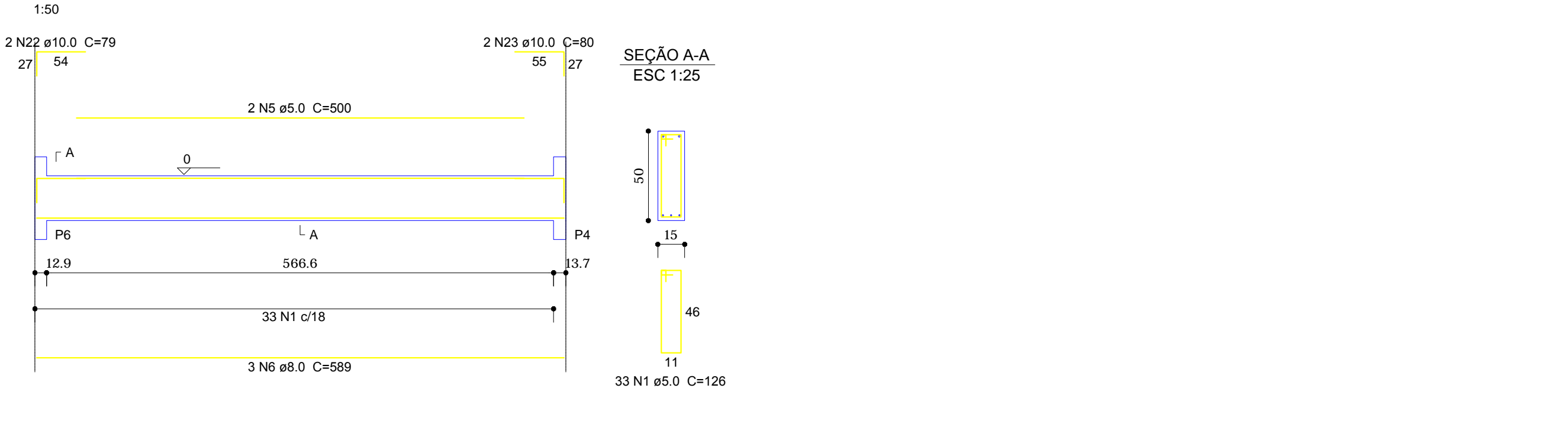
V9  
1:50



V10  
1:50



V11  
1:50



VIGAS BALDRAME

Relação do aço

CAÇO	N	DIAM	Q	UNIT	C.TOTAL (m)	C.TOTAL (cm)
CA60	1	5.0	533	125	67158	67158
	2	5.0	2	590	1180	1180
	3	5.0	196	196	26656	26656
	4	5.0	2	570	1140	1140
	5	5.0	4	500	2000	2000
	6	8.0	3	589	1767	1767
	7	10.0	4	640	2560	2560
	8	10.0	2	1051	2102	2102
	9	10.0	2	450	900	900
	10	10.0	2	637	1274	1274
	11	10.0	2	1149	2298	2298
	12	10.0	2	198	396	396
	13	10.0	2	621	1242	1242
	14	10.0	2	864	1728	1728
	15	10.0	2	242	484	484
	16	10.0	2	239	478	478
	17	10.0	4	240	960	960
	18	10.0	6	102	612	612
	19	10.0	2	844	1688	1688
	20	10.0	2	329	658	658
	21	10.0	2	904	1808	1808
	22	10.0	2	79	158	158
	23	10.0	2	80	160	160
	24	10.0	2	852	1704	1704
	25	10.0	2	875	1750	1750
	26	10.0	1	420	420	420
	27	10.0	2	1198	2396	2396
	28	10.0	2	621	1242	1242
	29	12.5	4	1197	4788	4788
	30	12.5	2	983	1966	1966
	31	12.5	2	645	1290	1290
	32	12.5	2	991	1982	1982
	33	12.5	2	650	1300	1300
	34	12.5	4	902	3608	3608
	35	12.5	2	648	1296	1296
	36	12.5	2	850	1700	1700
	37	12.5	2	877	1754	1754
	38	12.5	1	225	225	225
	39	12.5	2	1172	2344	2344
	40	16.0	4	903	3612	3612
	41	16.0	2	481	962	962
	42	16.0	2	501	1002	1002

Resumo do aço

CAÇO	DIAM	C.TOTAL (m)	BIARRAS
CA50	8.0	17.7	2
	10.0	270.6	25
	12.5	222.6	21
	16.0	55.8	6
CA60	5.0	981.4	82

Vol. de concreto total (C-25) = 11.61 m³  
Área de forma total = 165 m²

Obr: Direitos autênticos conforme Lei nº 9.610 de 19.02.1998.  
Criado por PAR PROJETOS DE ENGENHARIA E ARQUITETURA LTDA / CLICPROJETO  
CNPJ: 16.089.975/0001-47 Registro Crea: SC: 124083-1

APROVAÇÃO/PREFEITURA



Responsável Técnico

**AMPLIAÇÃO ESCOLA MUNICIPAL  
PROFº NESTOR MARGARIDA**  
Rua Tupiniquim - nº 35 - Araponguinhas - Timbó - SC

Engenharia e Arquitetura

Rua Pastor Bümel, 30 - Sala 101 - Edifício Paris - Centro - Timbó - SC  
Cep: 89120-000  
Fone / Fax: (47) 3382-6464  
e-mail: clicprojeto@gmail.com

Prefeitura Municipal de Timbó

Especificação: VIGAS BALDRAME  
Escala: Indicada  
Planta: 02/09