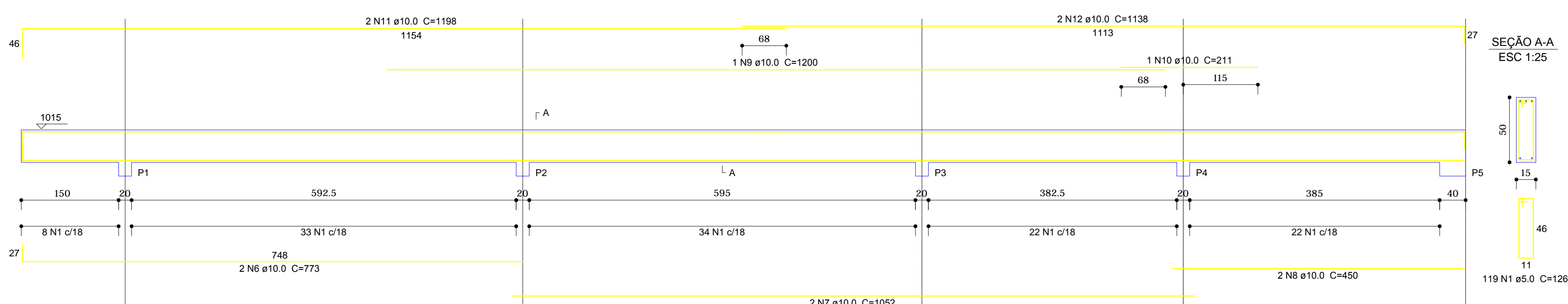
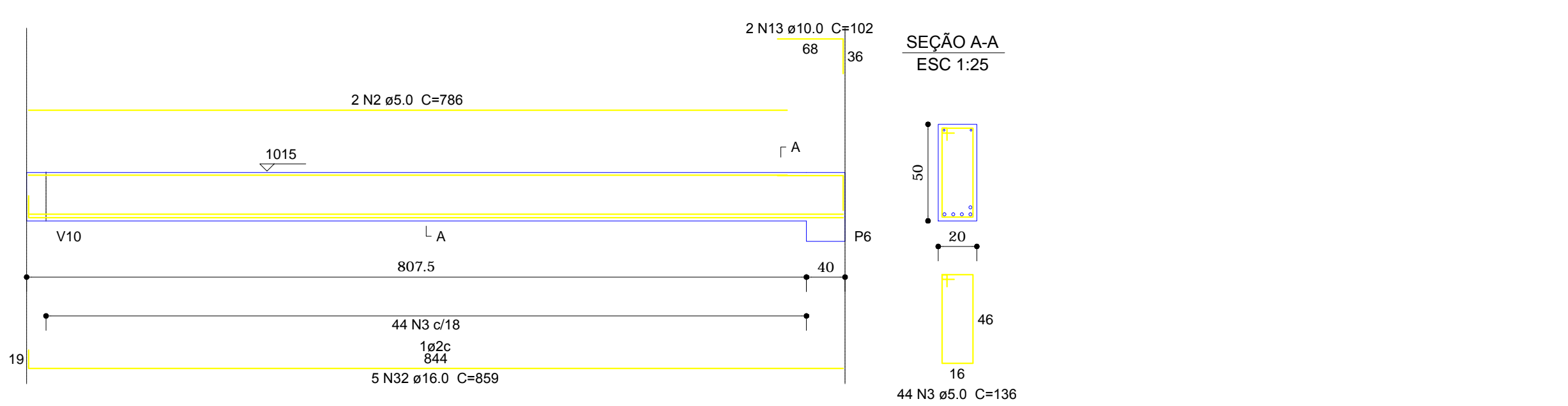


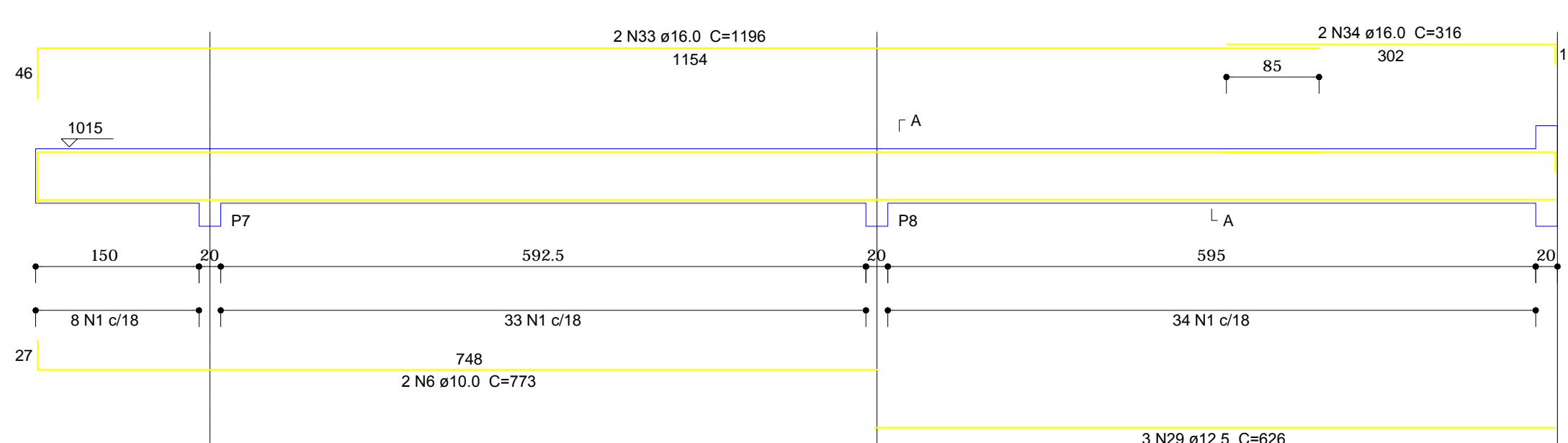
V1  
1:50



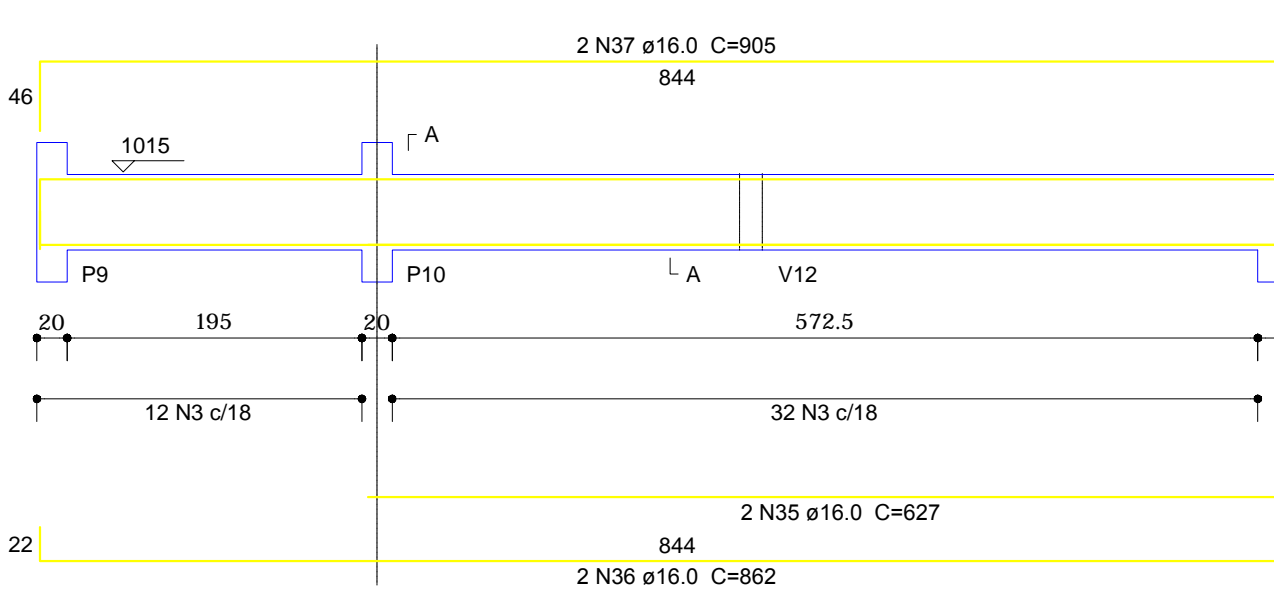
V2  
1:50



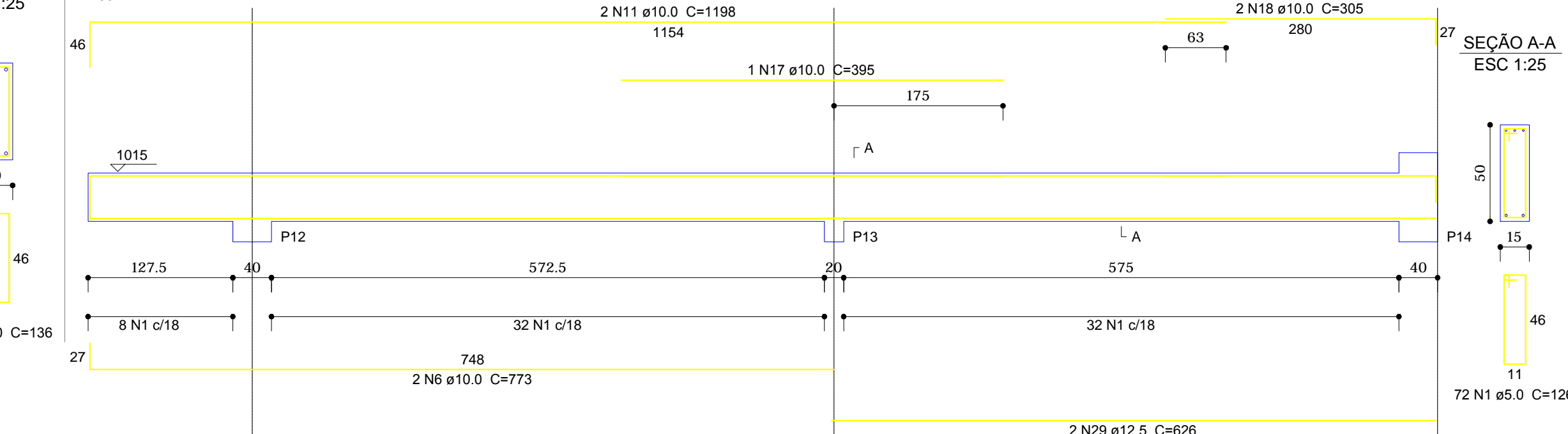
V3  
1:50



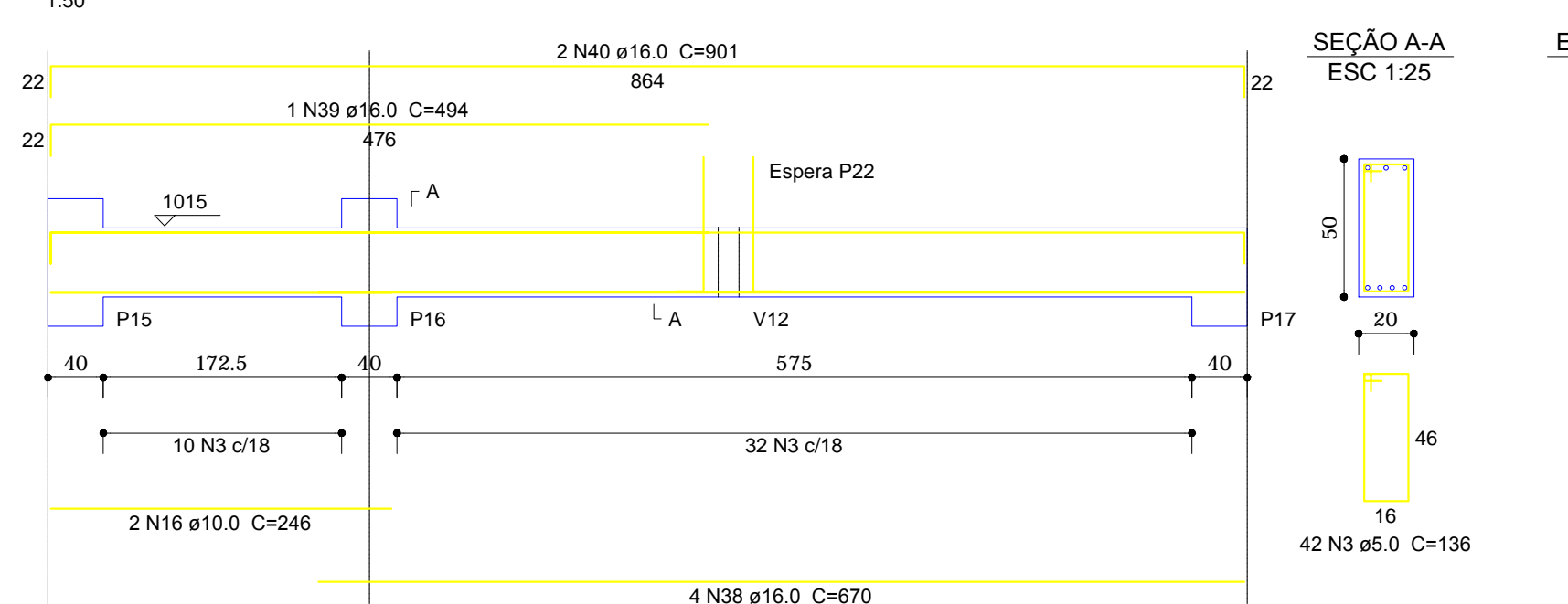
V4  
1:50



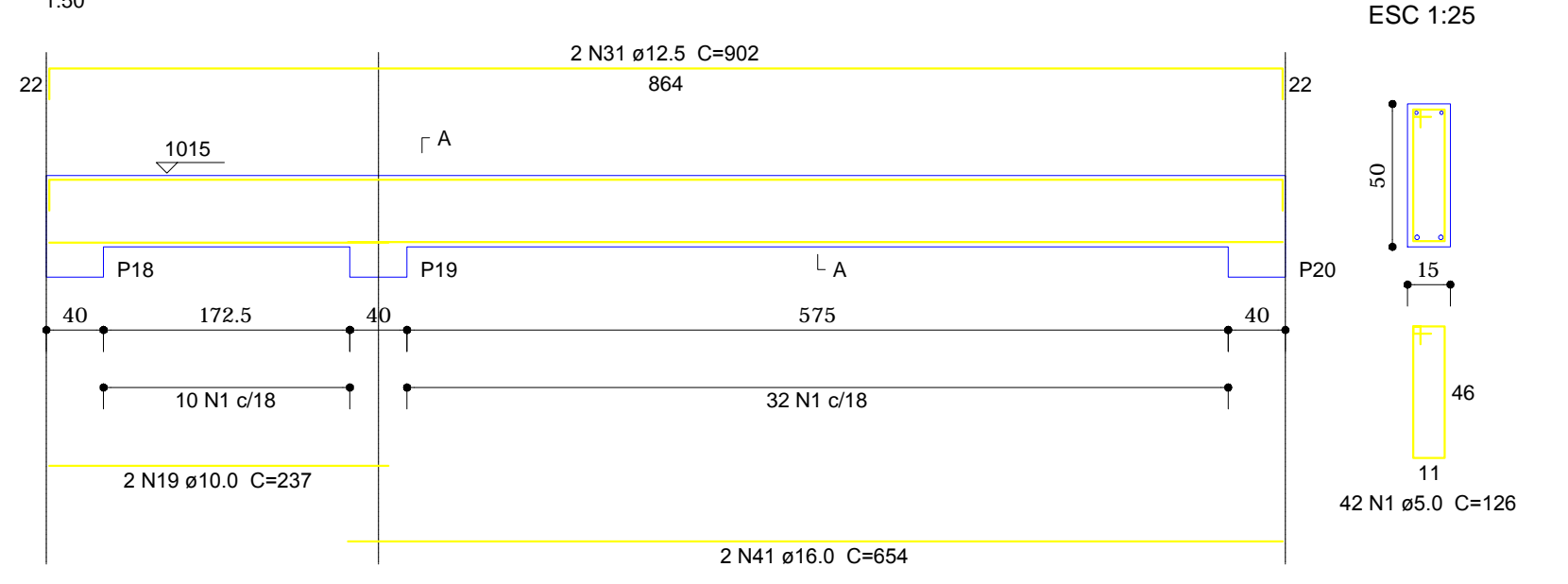
V5  
1:50



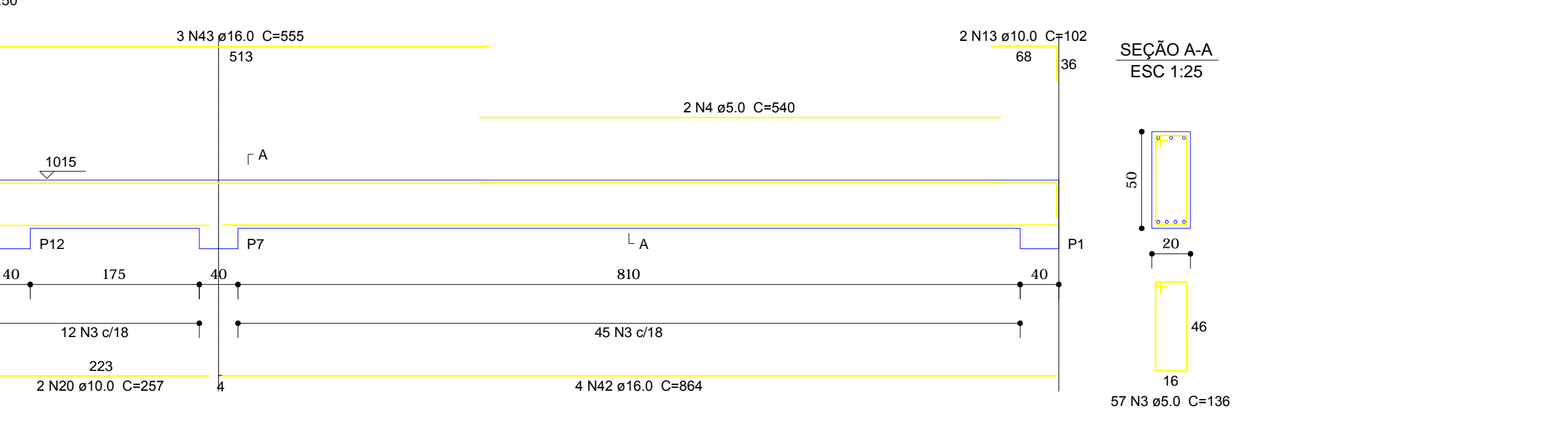
V6  
1:50



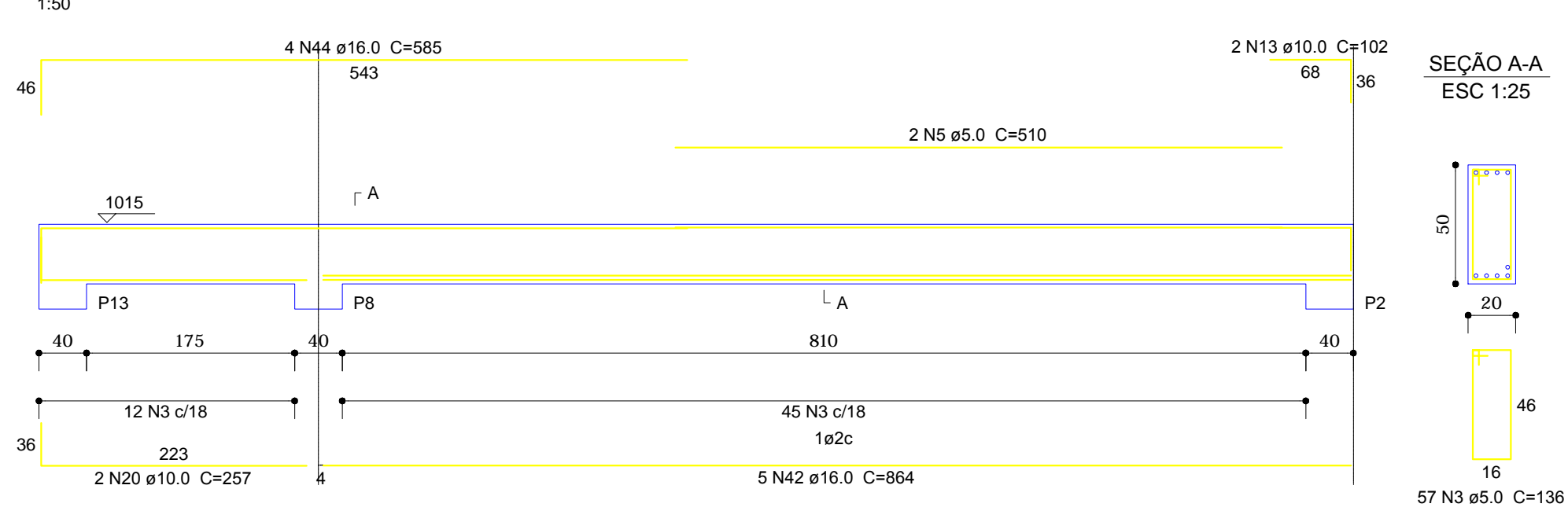
V7  
1:50



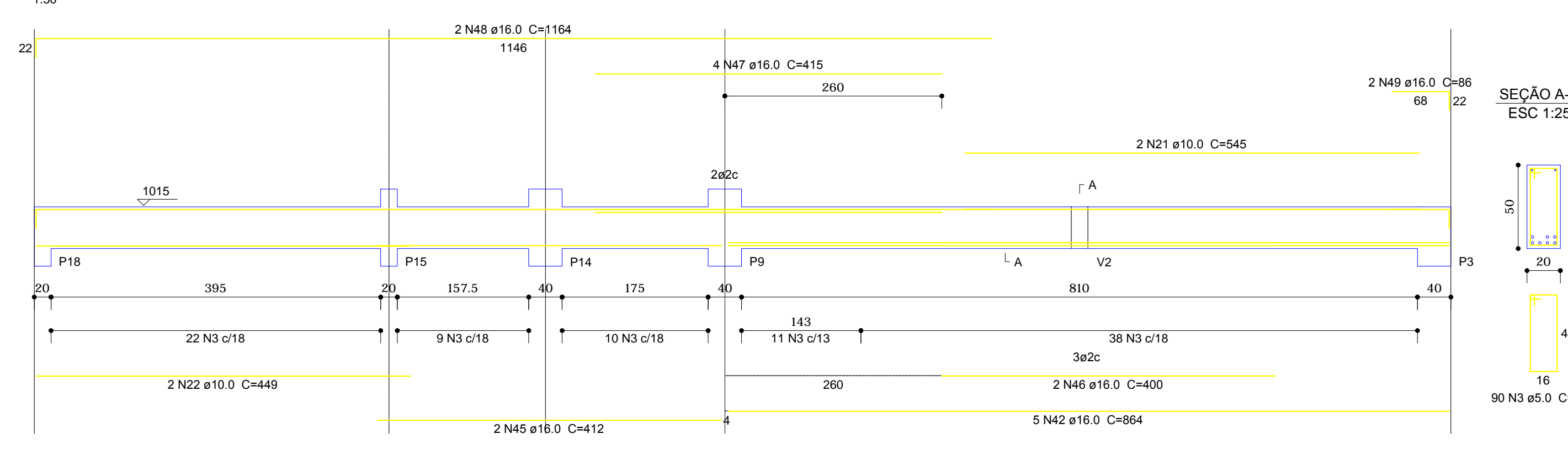
V8  
1:50



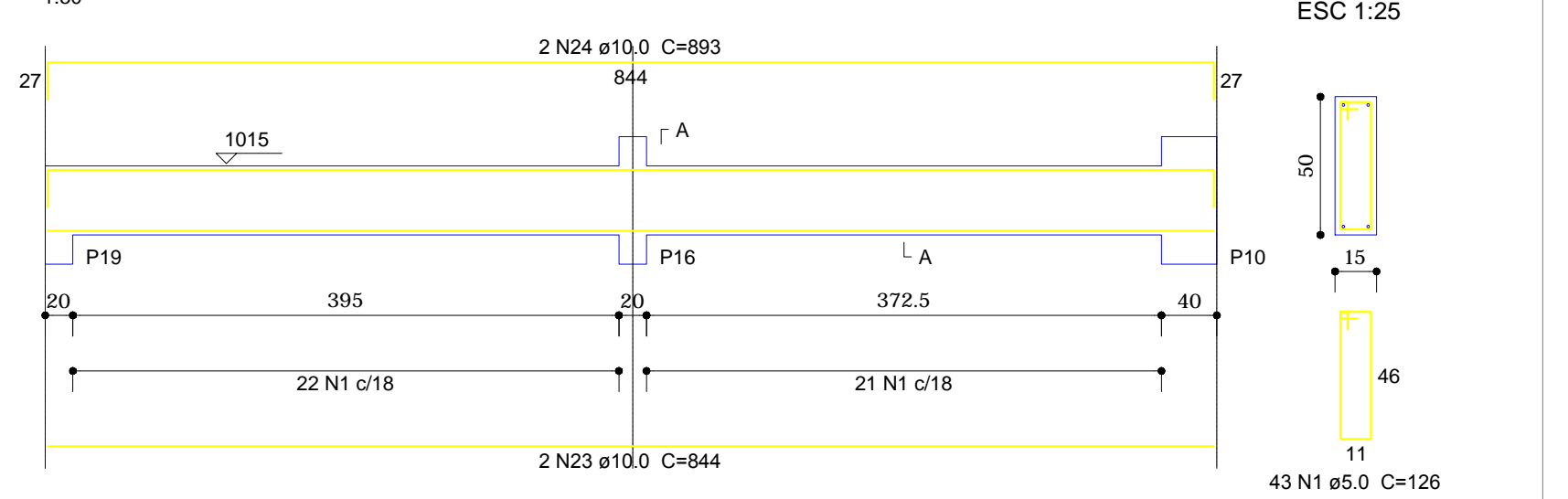
V9  
1:50



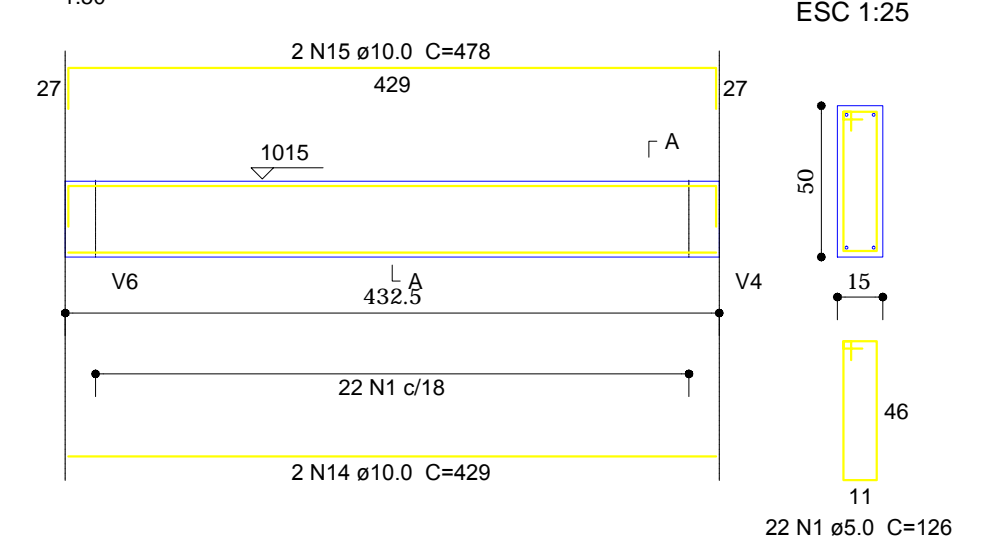
V10  
1:50



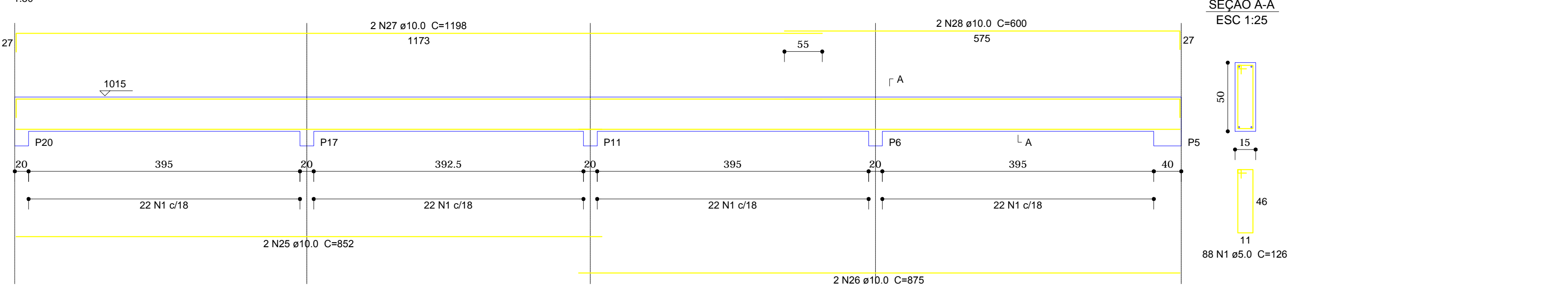
V11  
1:50



V12  
1:50



V13  
1:50



Relação do aço

CAO	N	DIAM	Q	UNIT (cm)	C.TOTAL (cm)
CA60	1	5.0	461	126	58086
CA60	2	5.0	2	796	1572
CA60	3	5.0	334	136	45424
CA60	4	5.0	2	540	1080
CA60	5	5.0	2	510	1020
CA60	6	10.0	6	773	4638
CA60	7	10.0	2	1052	2104
CA60	8	10.0	2	450	900
CA60	9	10.0	1	1200	1200
CA60	10	10.0	1	211	211
CA60	11	10.0	4	1198	4792
CA60	12	10.0	2	1138	2276
CA60	13	10.0	6	102	612
CA60	14	10.0	2	429	858
CA60	15	10.0	2	478	956
CA60	16	10.0	2	246	492
CA60	17	10.0	1	395	395
CA60	18	10.0	2	305	610
CA60	19	10.0	2	237	474
CA60	20	10.0	4	257	1028
CA60	21	10.0	2	545	1090
CA60	22	10.0	2	449	898
CA60	23	10.0	2	844	1688
CA60	24	10.0	2	893	1786
CA60	25	10.0	2	852	1704
CA60	26	10.0	2	875	1750
CA60	27	10.0	2	1198	2396
CA60	28	10.0	2	600	1200
CA60	29	12.5	5	626	3130
CA60	30	12.5	5	114	570
CA60	31	12.5	2	902	1804
CA60	32	16.0	5	859	4295
CA60	33	16.0	2	1198	2396
CA60	34	16.0	2	316	632
CA60	35	16.0	2	627	1254
CA60	36	16.0	2	862	1724
CA60	37	16.0	2	905	1810
CA60	38	16.0	4	670	2680
CA60	39	16.0	1	494	494
CA60	40	16.0	2	901	1802
CA60	41	16.0	2	654	1308
CA60	42	16.0	14	864	12096
CA60	43	16.0	3	555	1665
CA60	44	16.0	4	585	2340
CA60	45	16.0	2	412	824
CA60	46	16.0	2	400	800
CA60	47	16.0	4	415	1660
CA60	48	16.0	2	1164	2328
CA60	49	16.0	2	86	172

Resumo do aço

CAO	DIAM	C.TOTAL (m)	BARRAS
CA50	10.0	340.6	31
CA50	12.5	56.5	6
CA50	16.0	402.8	37
CA60	5.0	1071.9	98

Vol. de concreto total (C-25) = 13,07 m³  
Área de forma total = 178,81 m²

APROVAÇÃO/PREFEITURA

PROJETO ESTRUTURAL

Responsável Técnico

**AMPLIAÇÃO ESCOLA MUNICIPAL PROFº NESTOR MARGARIDA**  
Rua Tupiniquim - nº 35 - Araçonginhas - Timbó - SC

**CLIC PROJETO**  
Engenharia e Arquitetura

Rua Pastor Blümel, 30 - Sala 101 - Edifício Paris - Centro - Timbó - SC  
Cep: 89120-000  
Fone / Fax: (47) 3382 6464  
e-mail: clicprojeto@gmail.com

Prefeitura Municipal de Timbó

Data: Janeiro/2016 | Área: 831,91m²

Especificação

Escala: Indica Prancha

**VIGAS DA COBERTURA**

07/09

www.clicprojeto.com

Obs: Direitos autorais conforme Lei nº 9.610 de 19.02.1998. Criado por PAR PROJETOS DE ENGENHARIA E ARQUITETURA LTDA / CLICPROJETO CNPJ: 16.068.872/0001-47 Registro Crea: SC: 124885-1