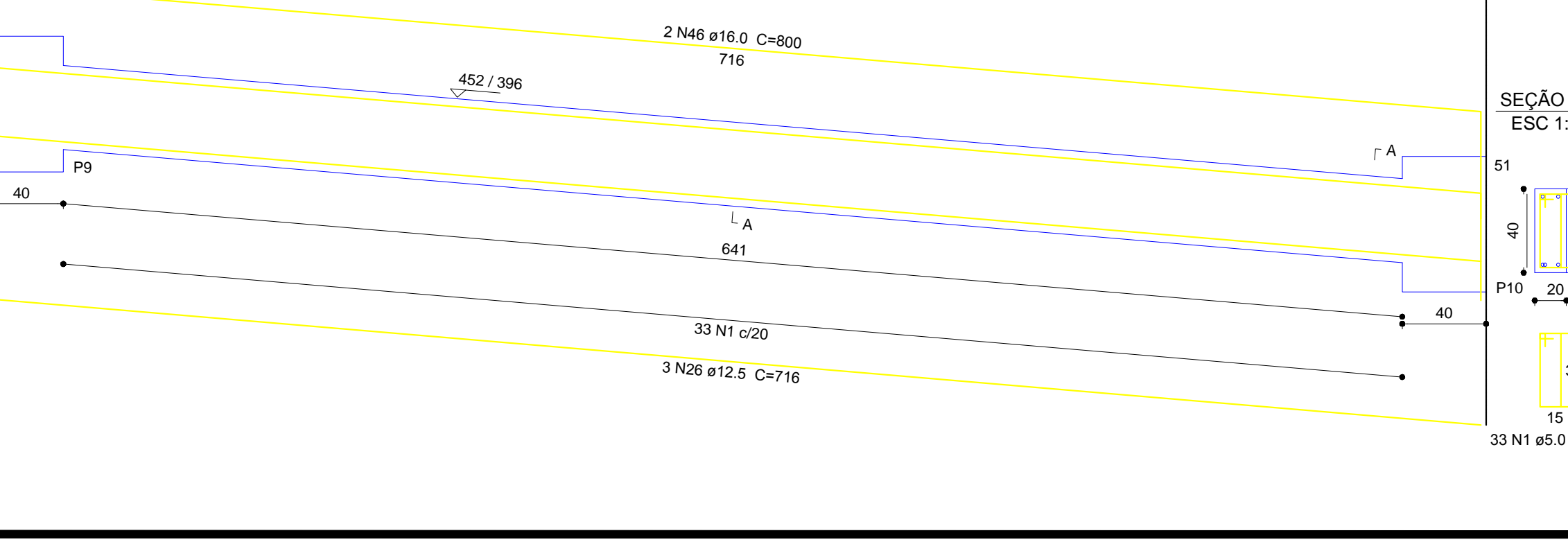
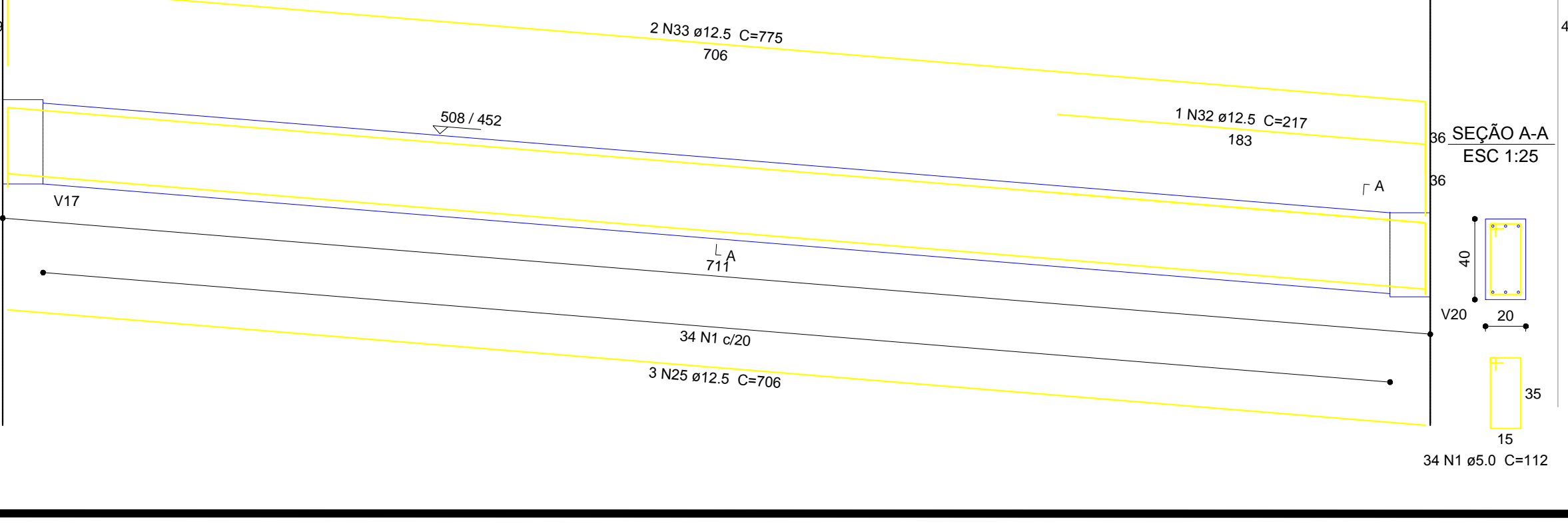
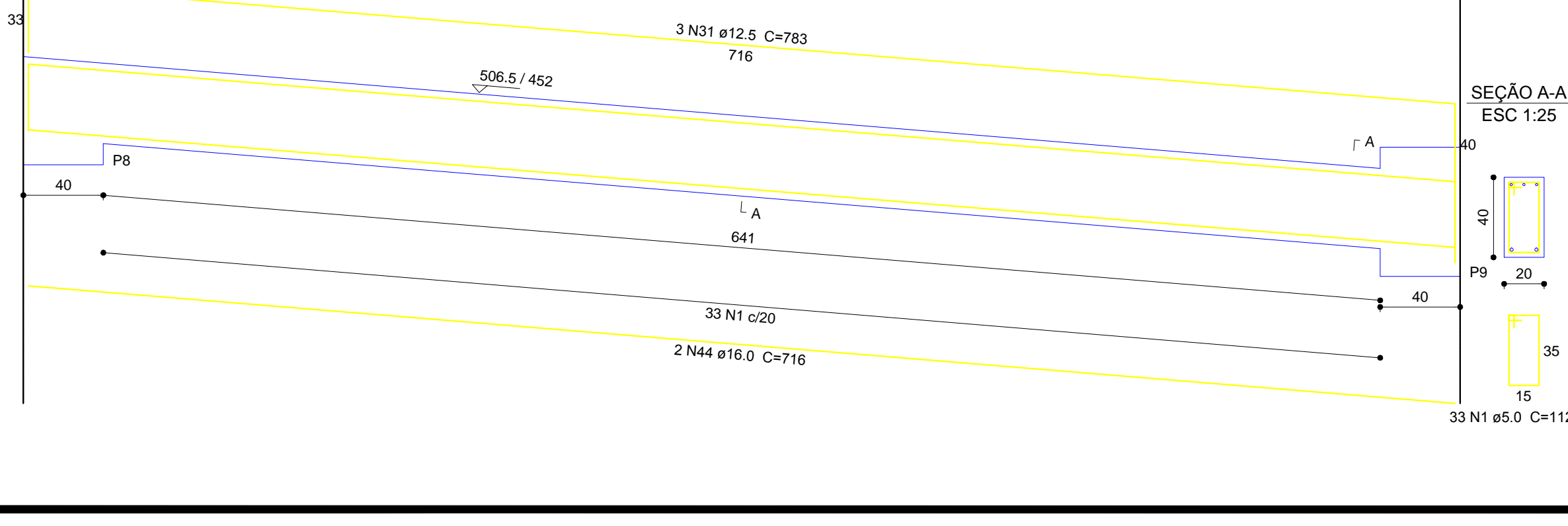
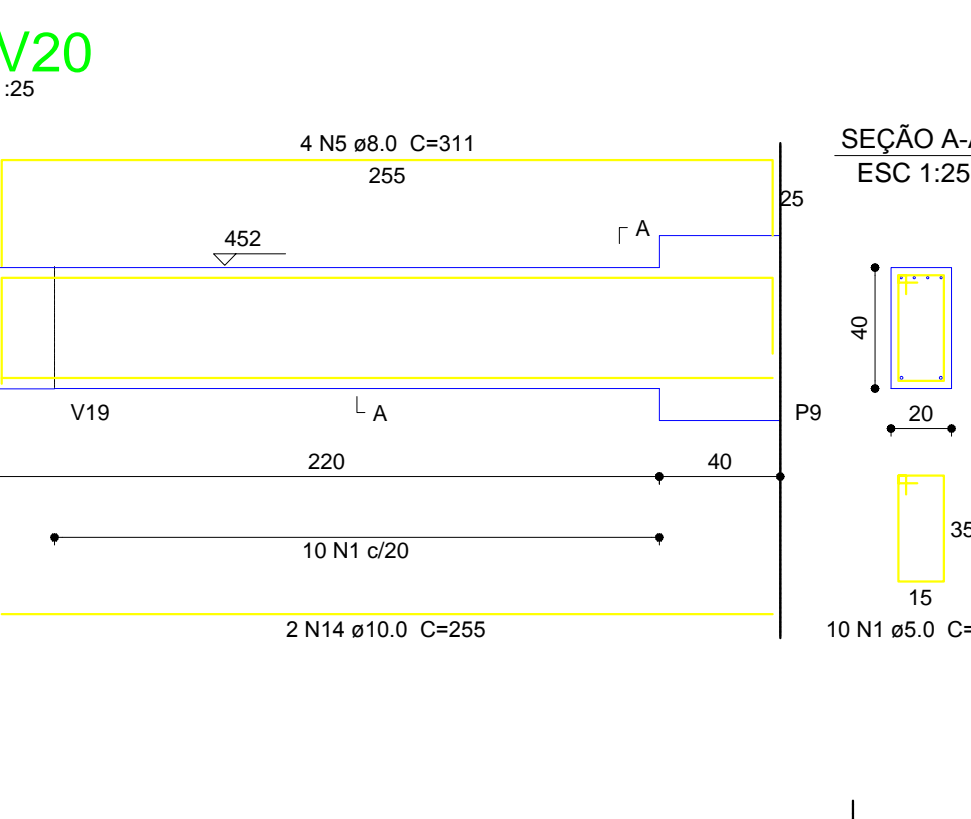
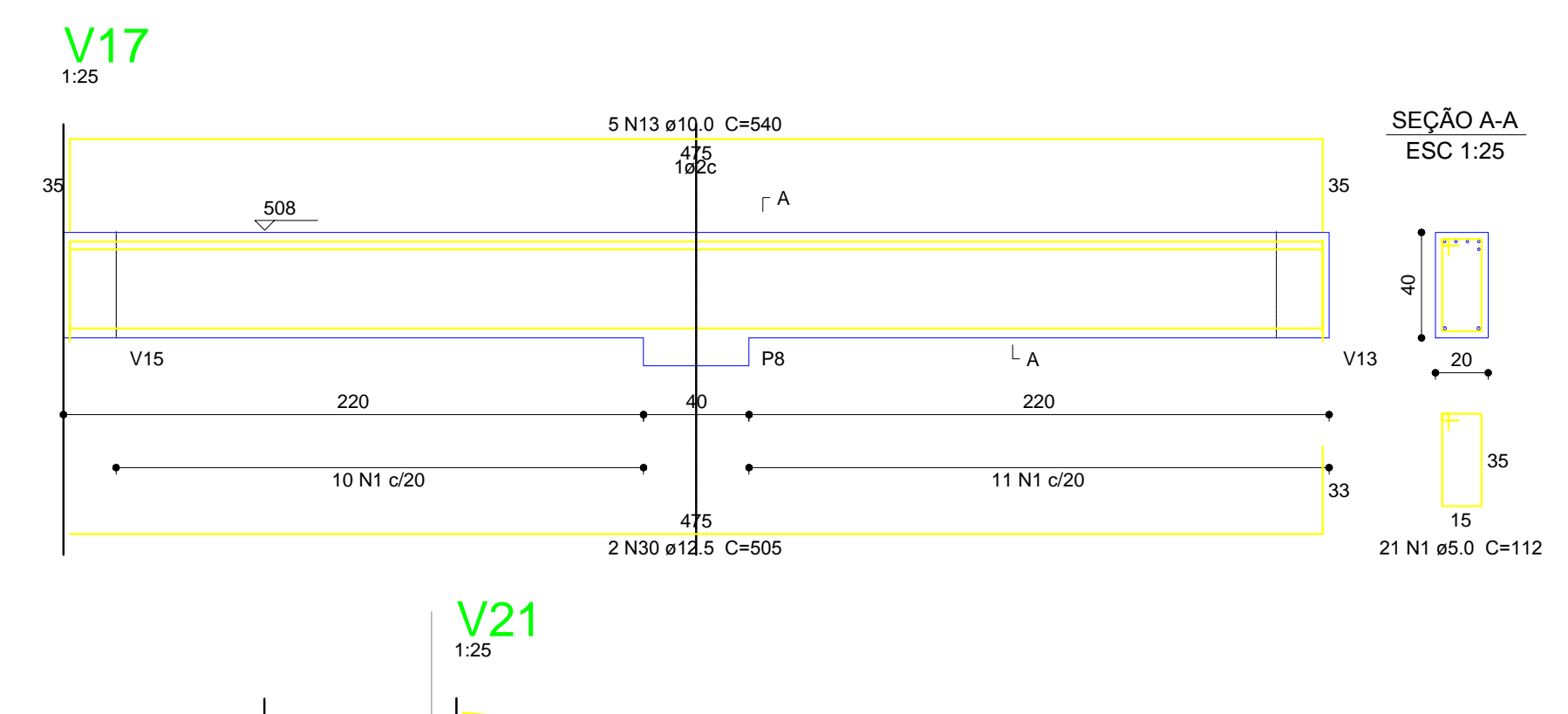
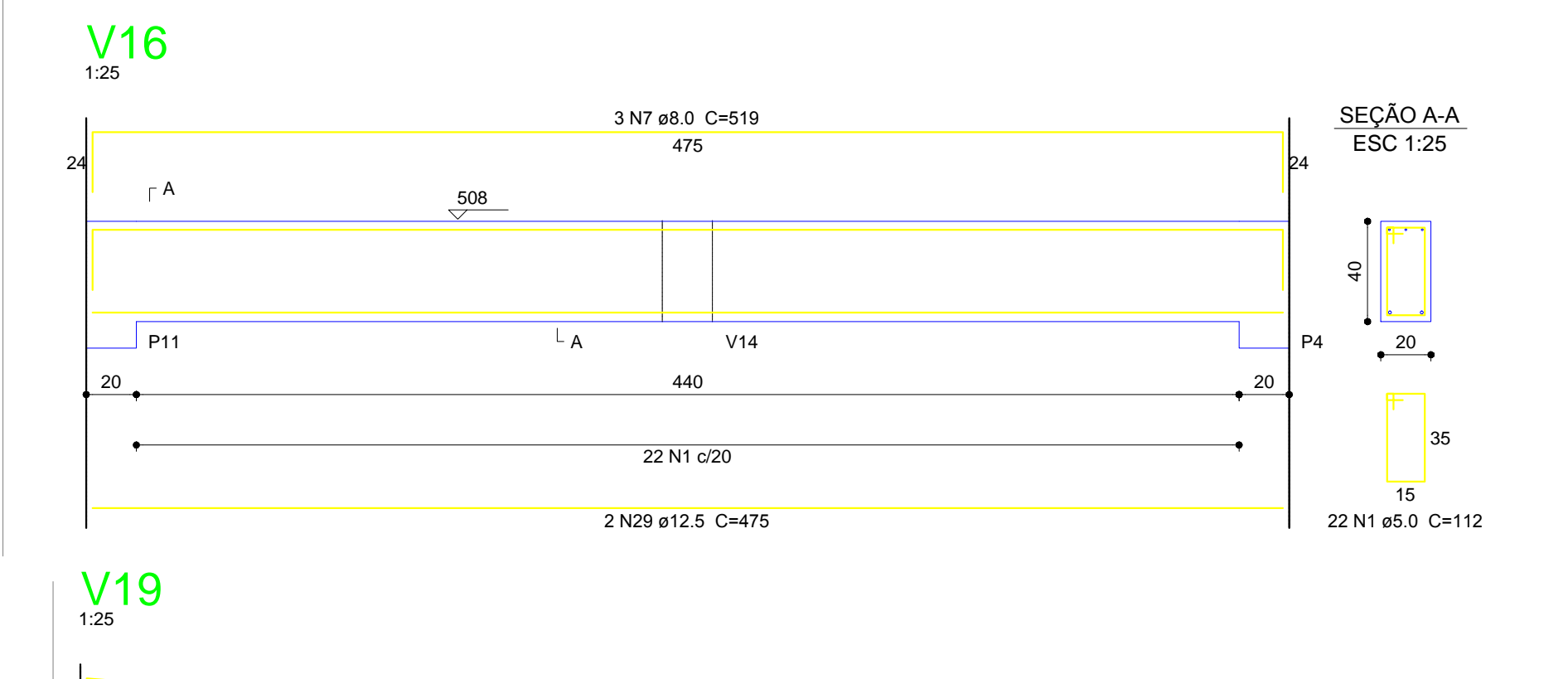
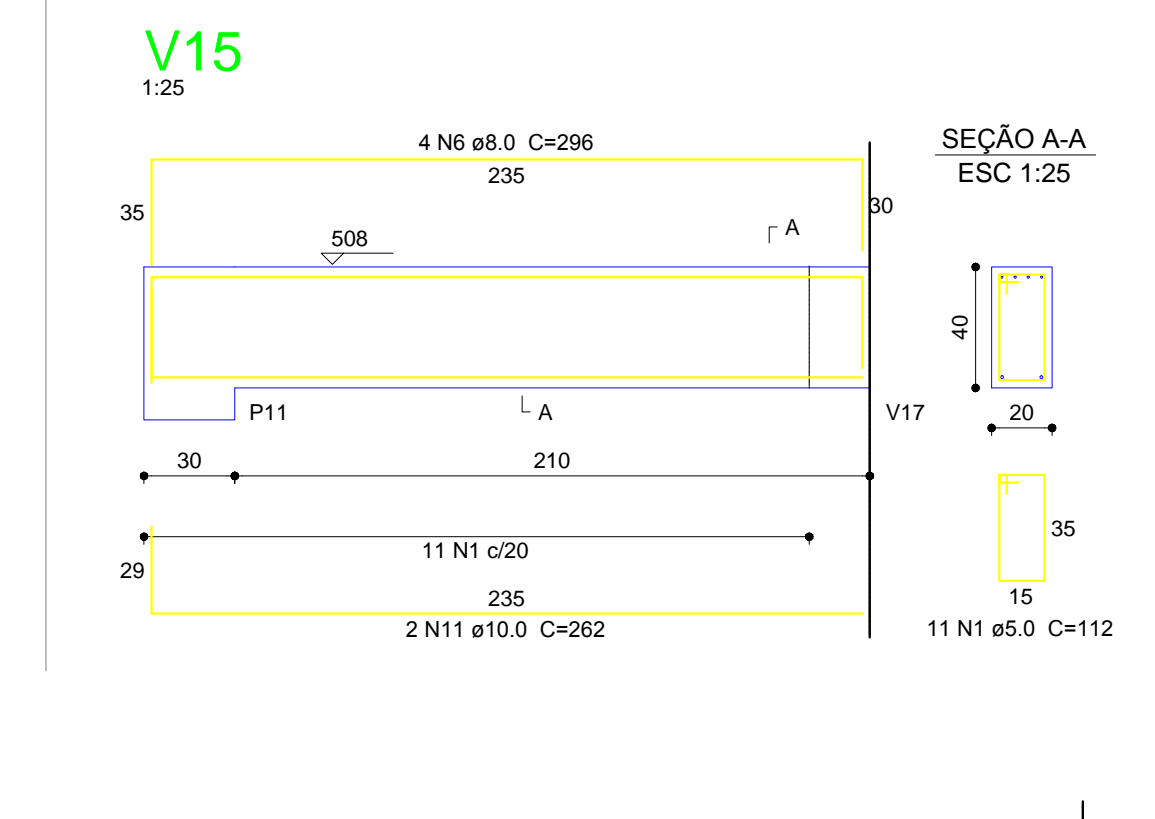
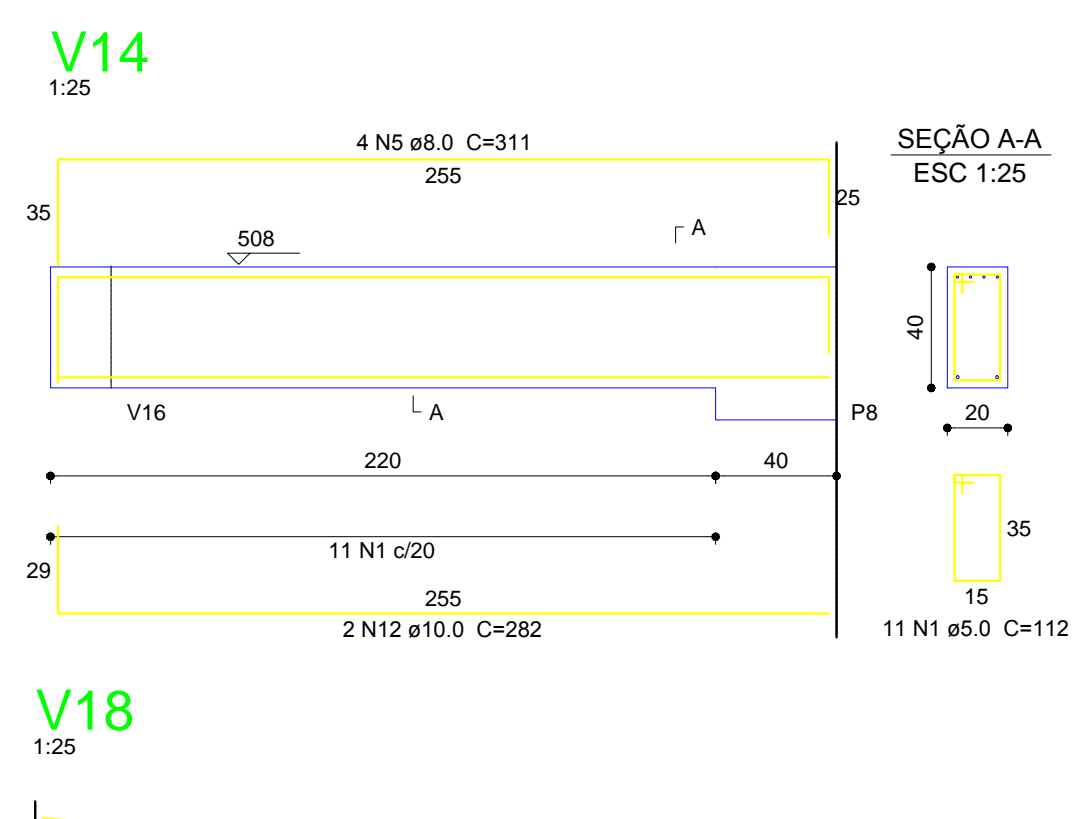
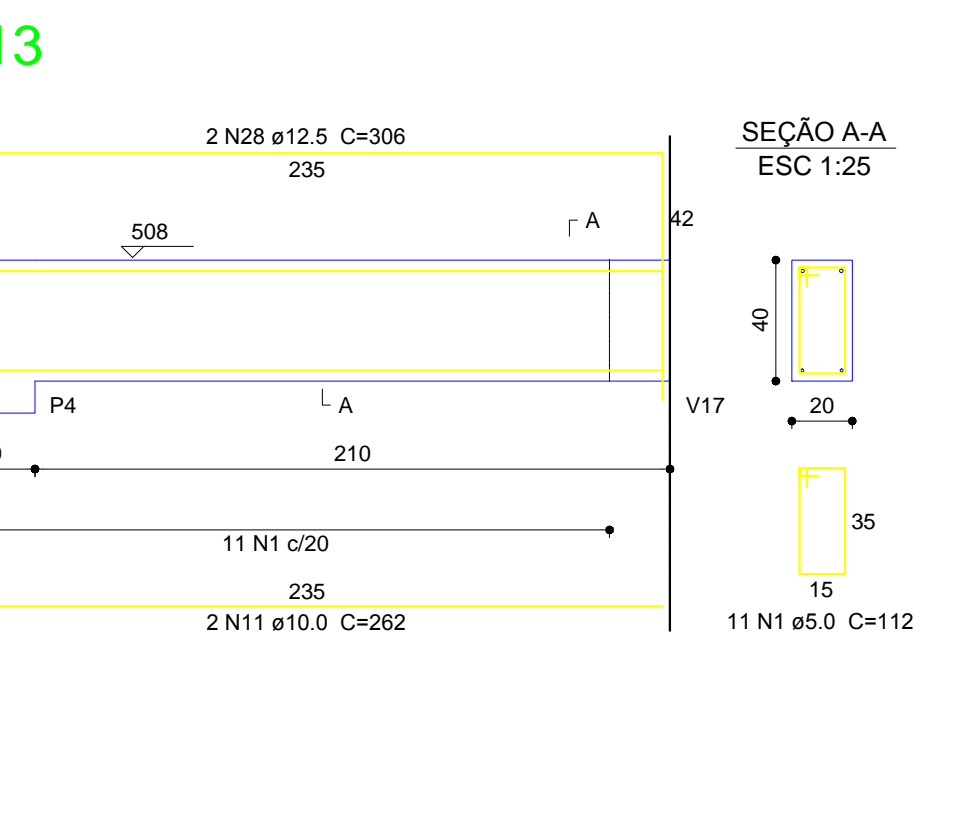
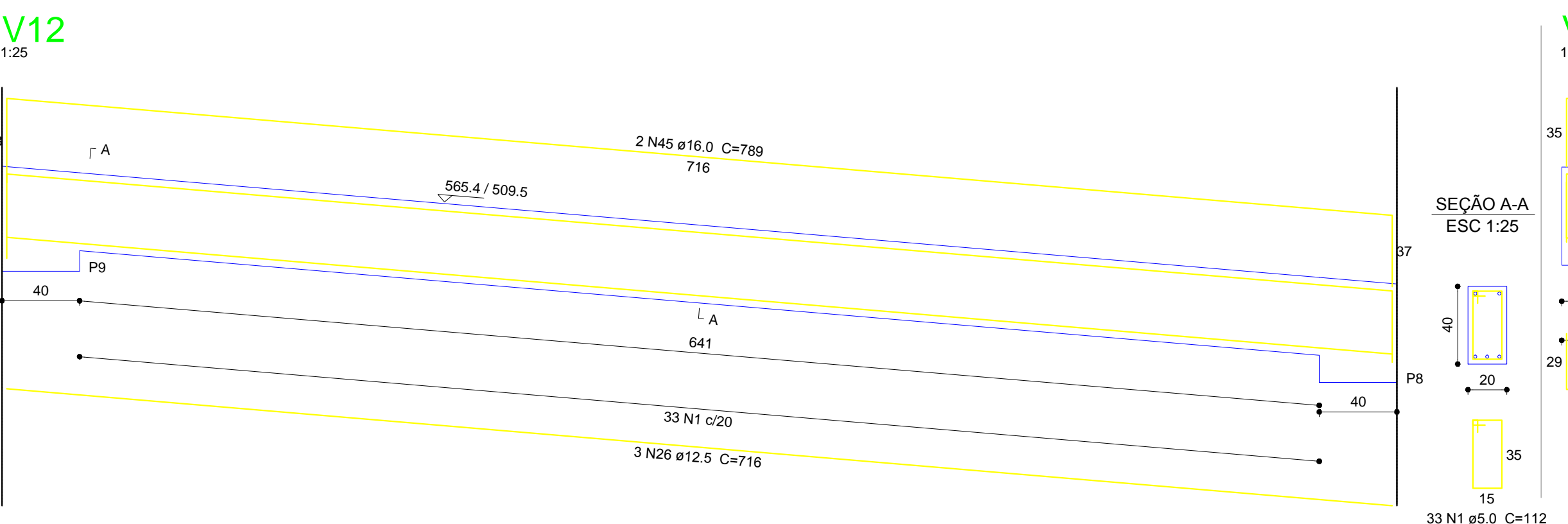
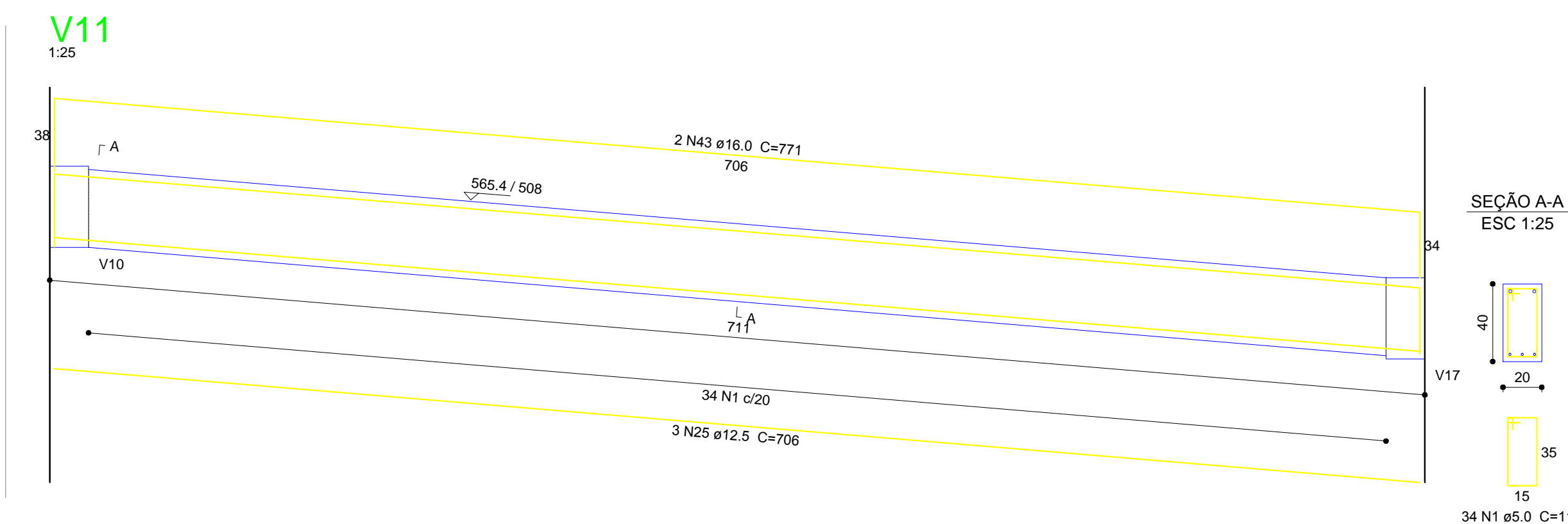
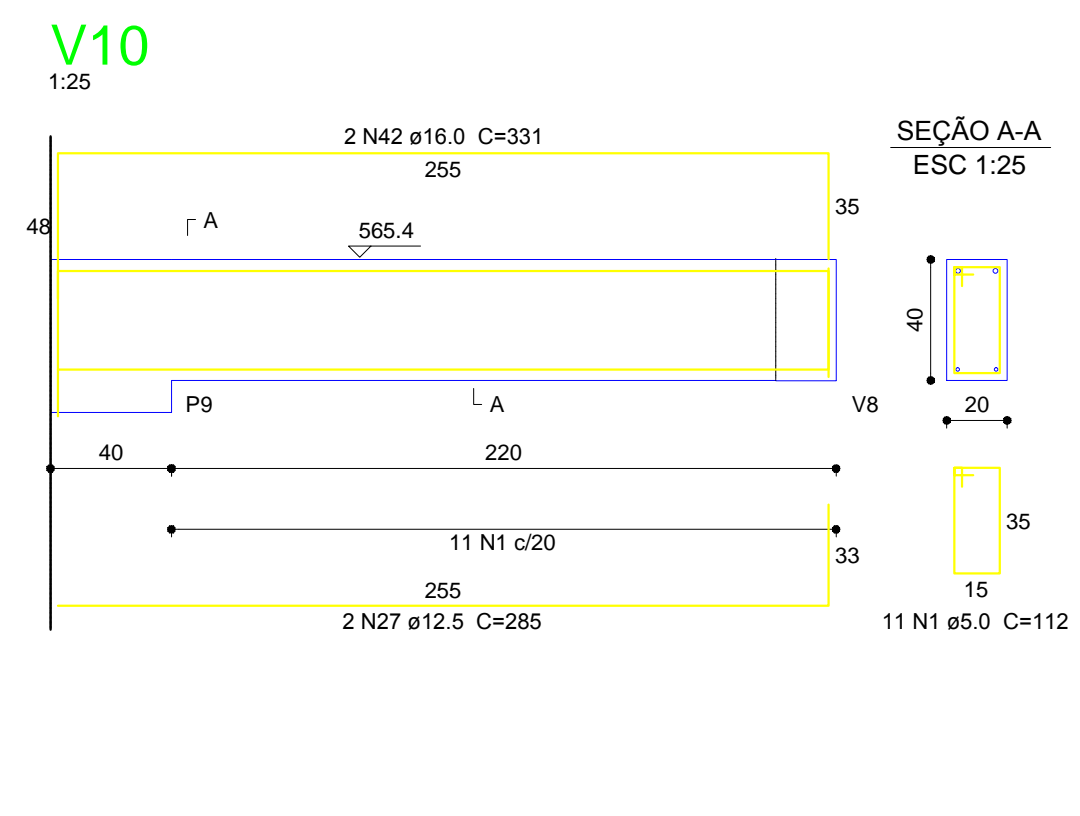
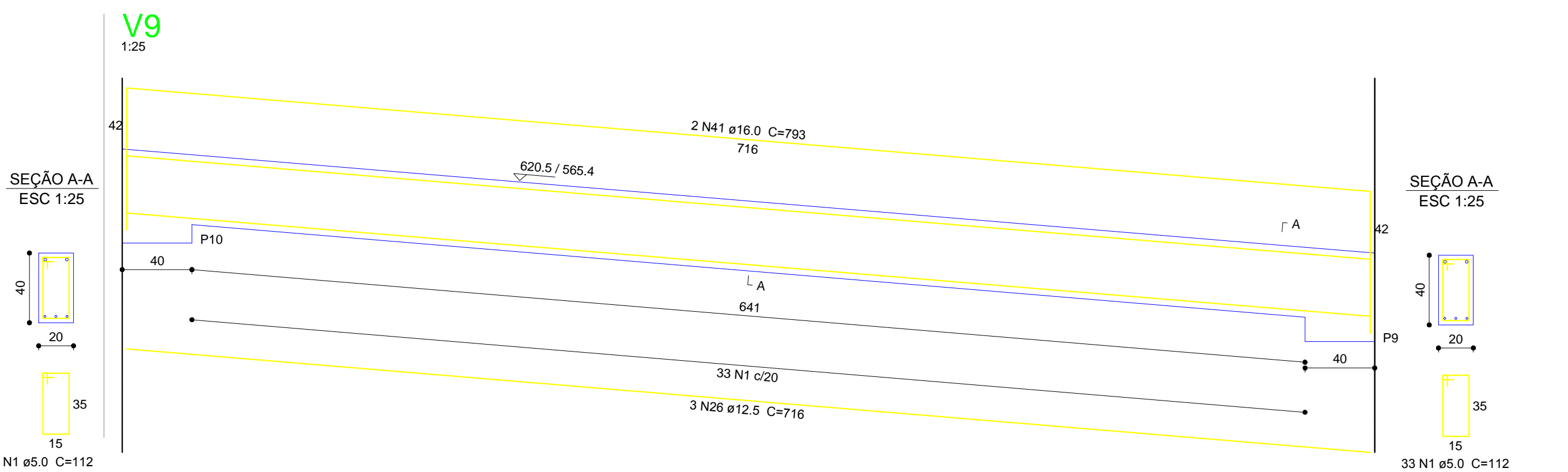
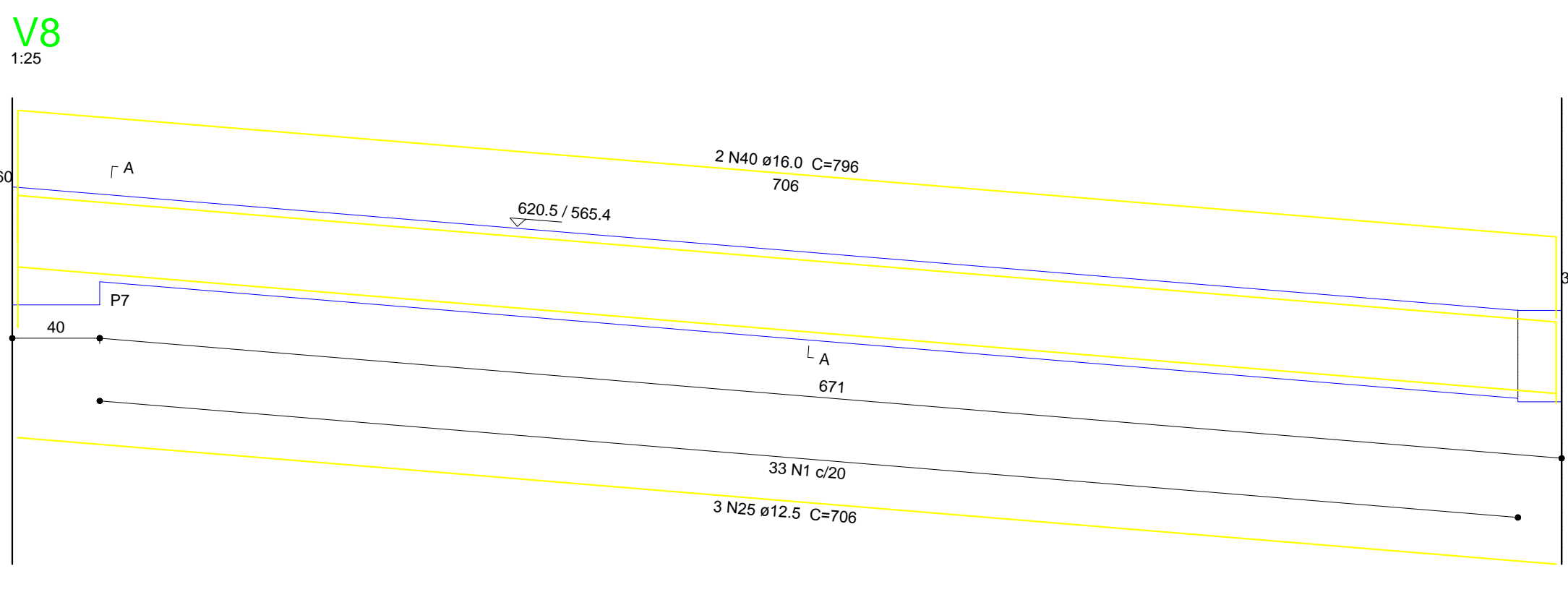
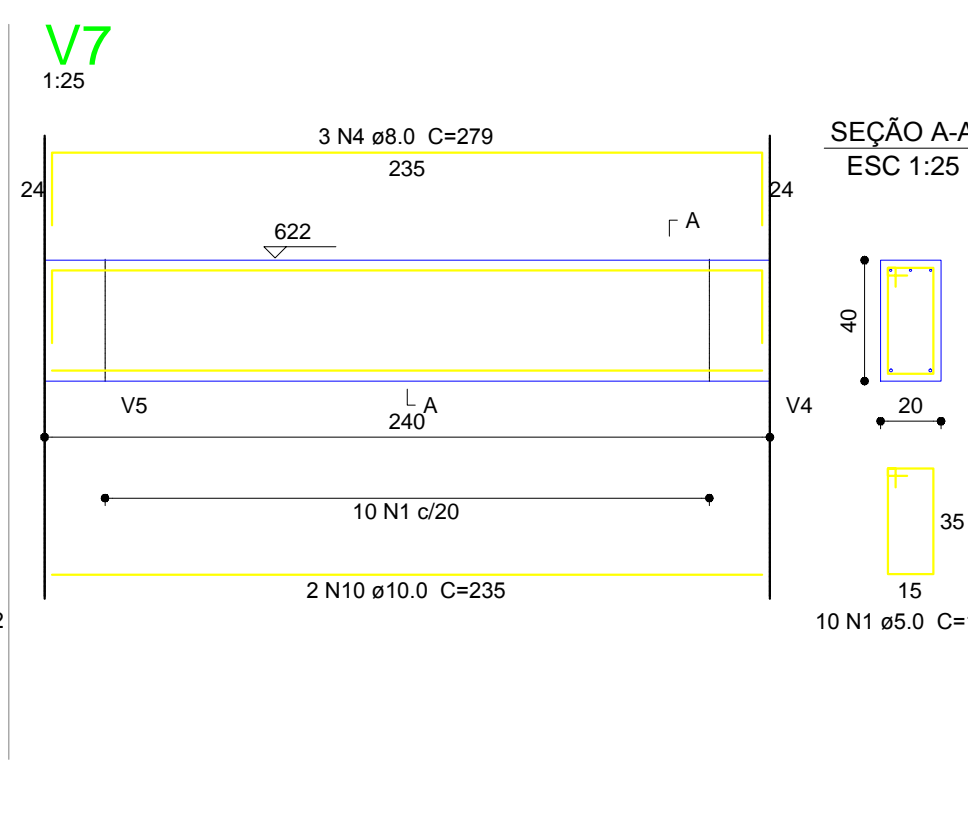
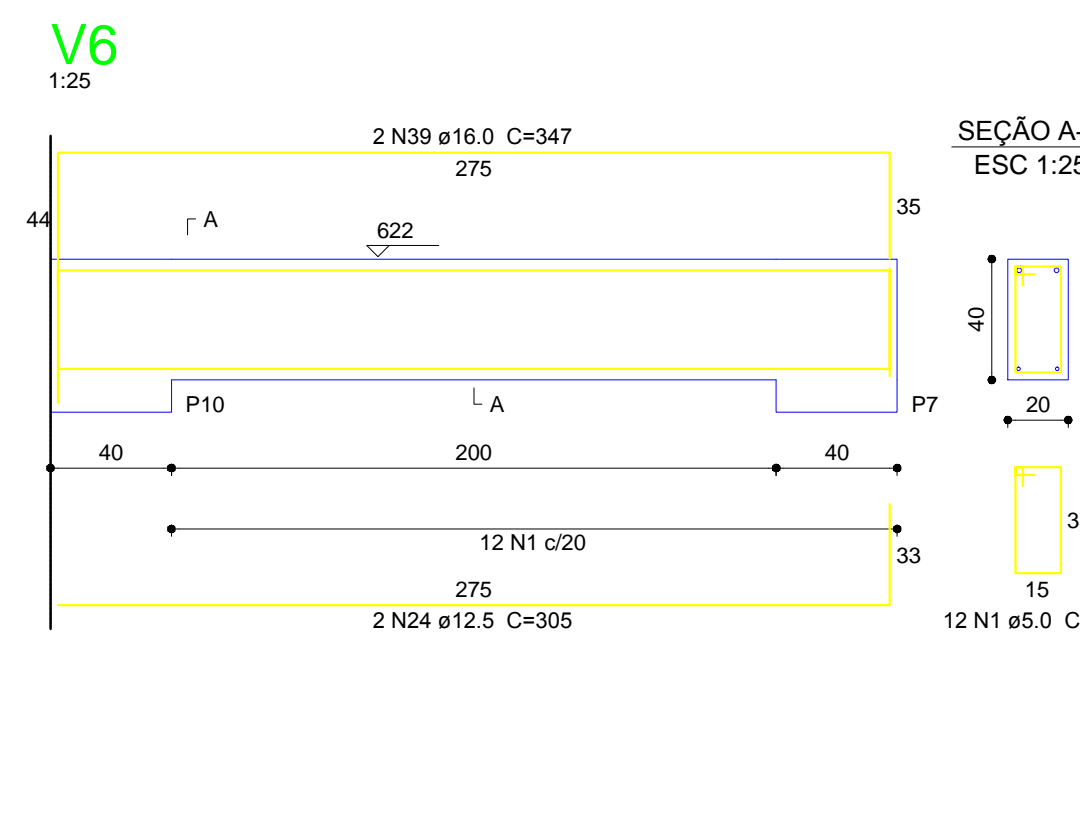
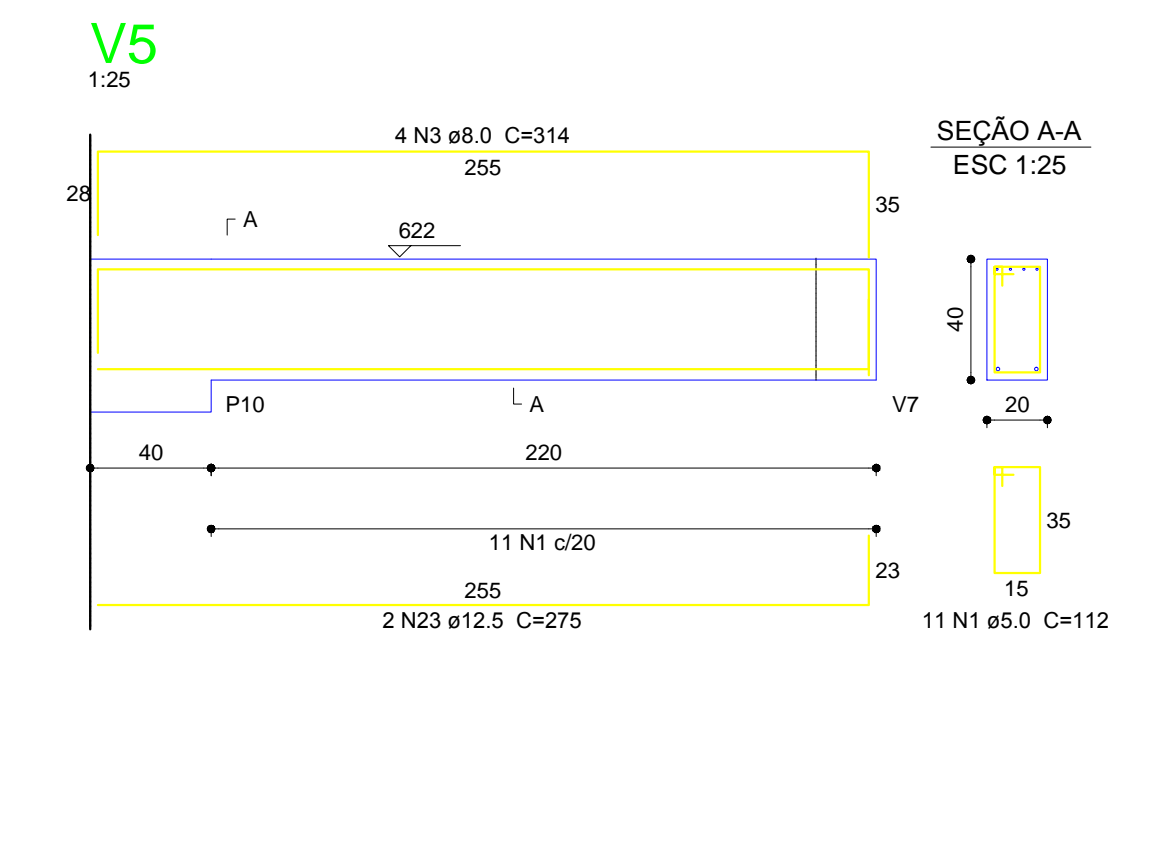
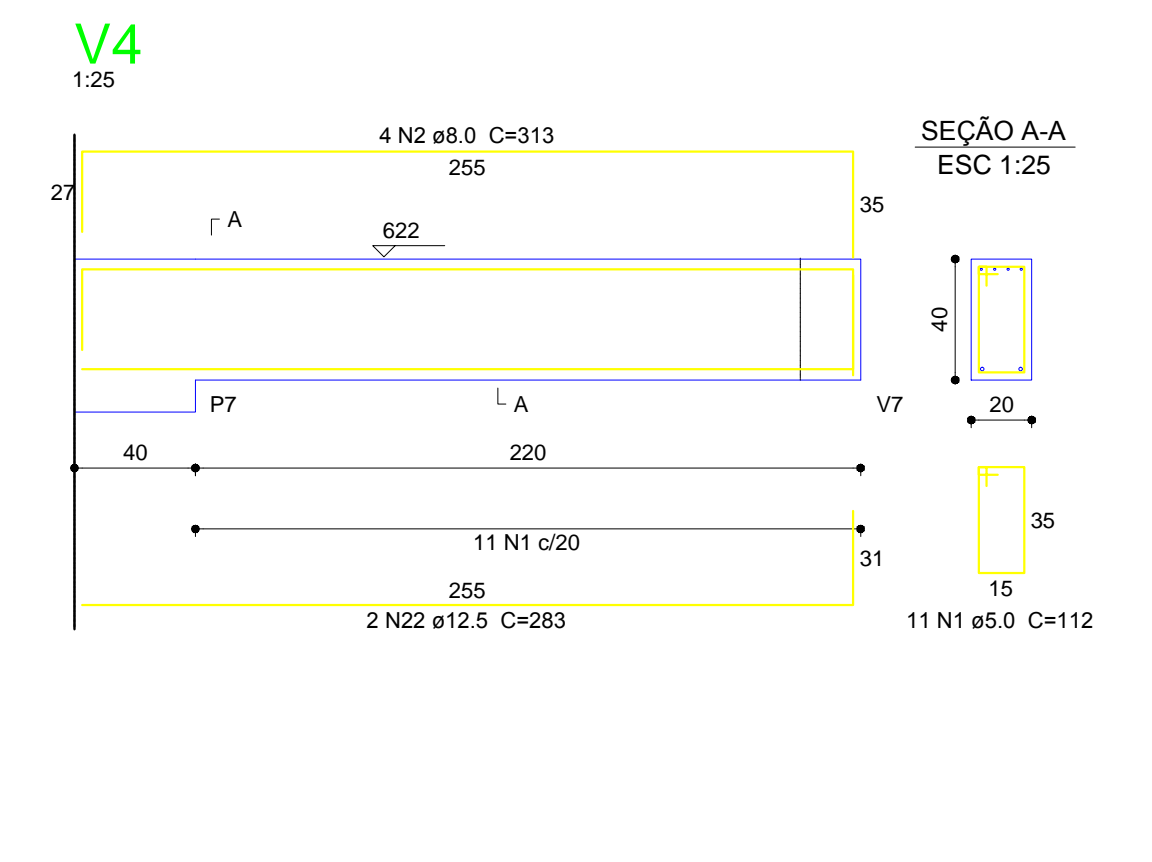
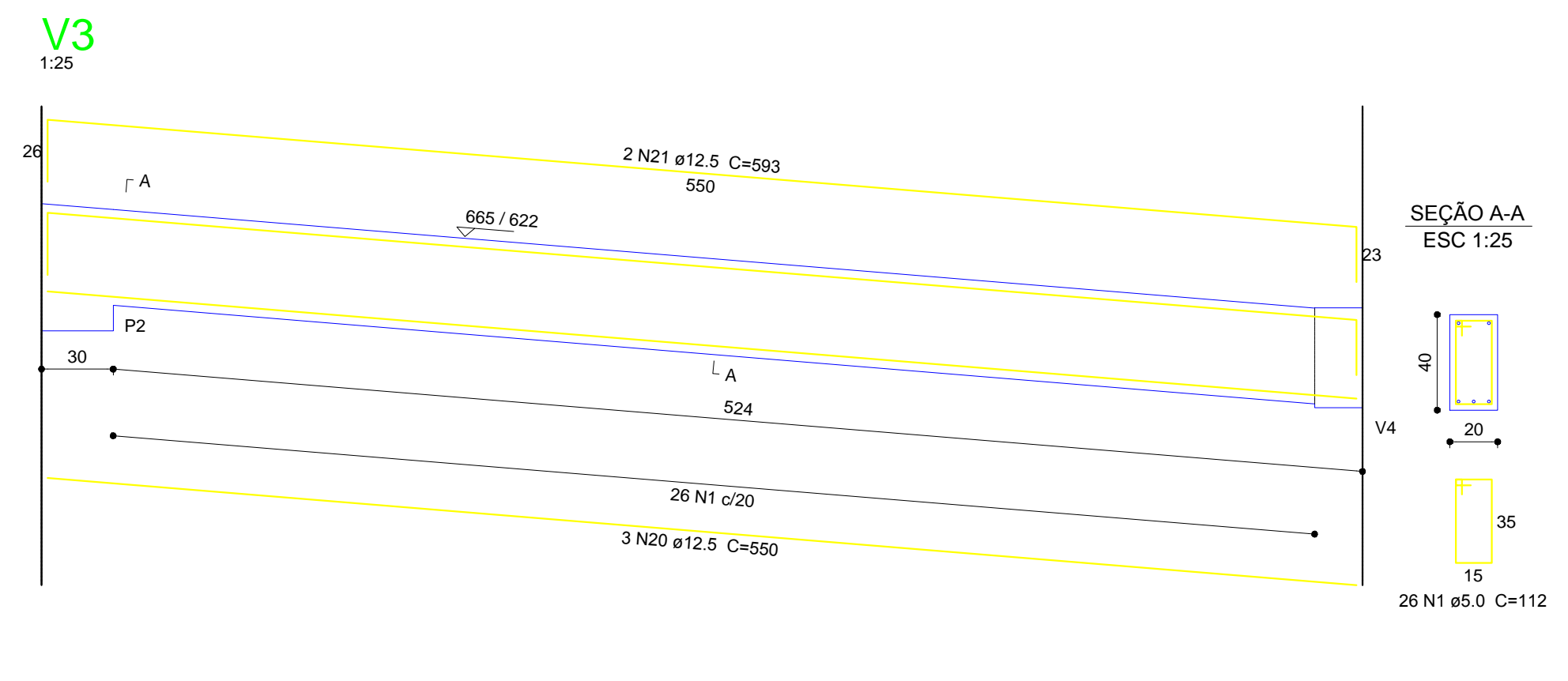
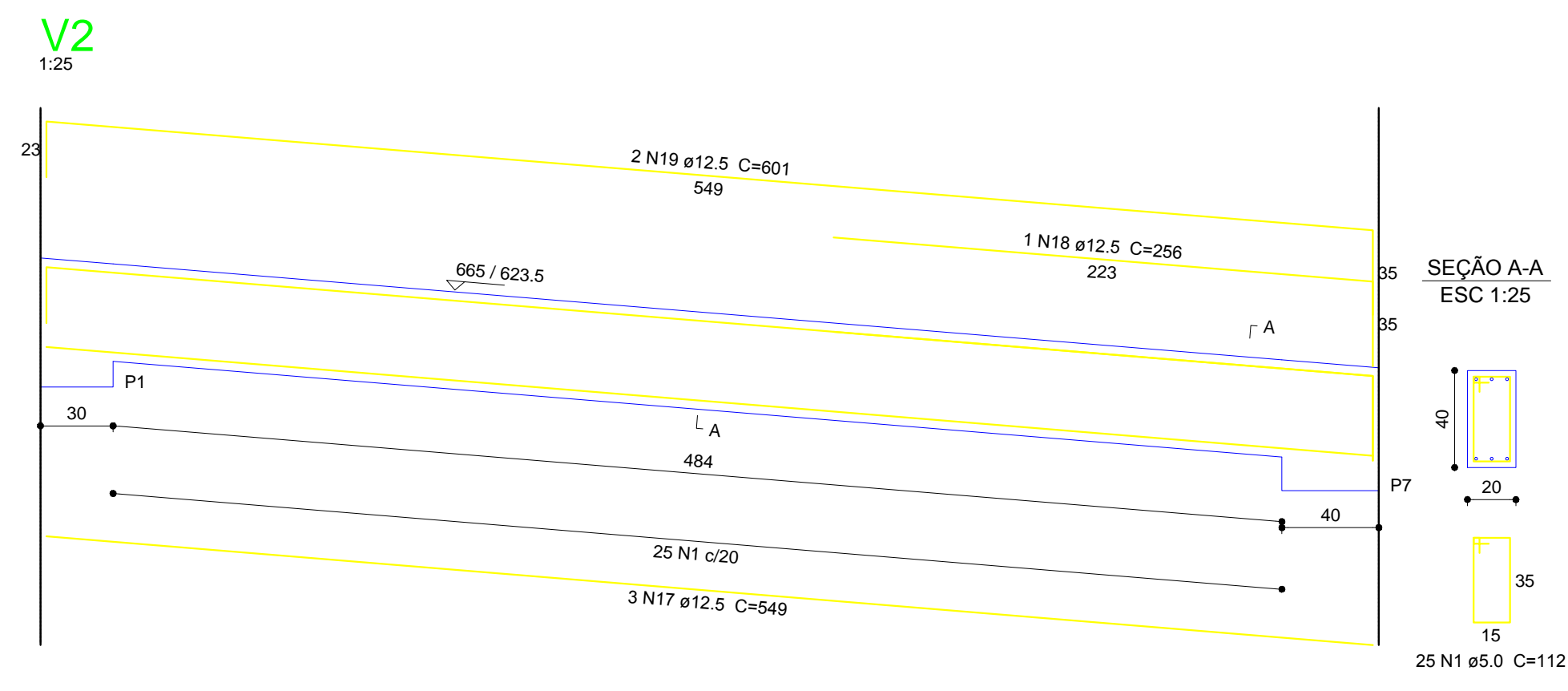


Obs: Direitos autorais conforme Lei nº 9.610 de 19.02.1998.
 Criado por PAR PROJETOS DE ENGENHARIA E ARQUITETURA LTDA / CLICPROJETO
 CNPJ: 16.066.975/0001-47 Registro Crea -SC: 124685-1

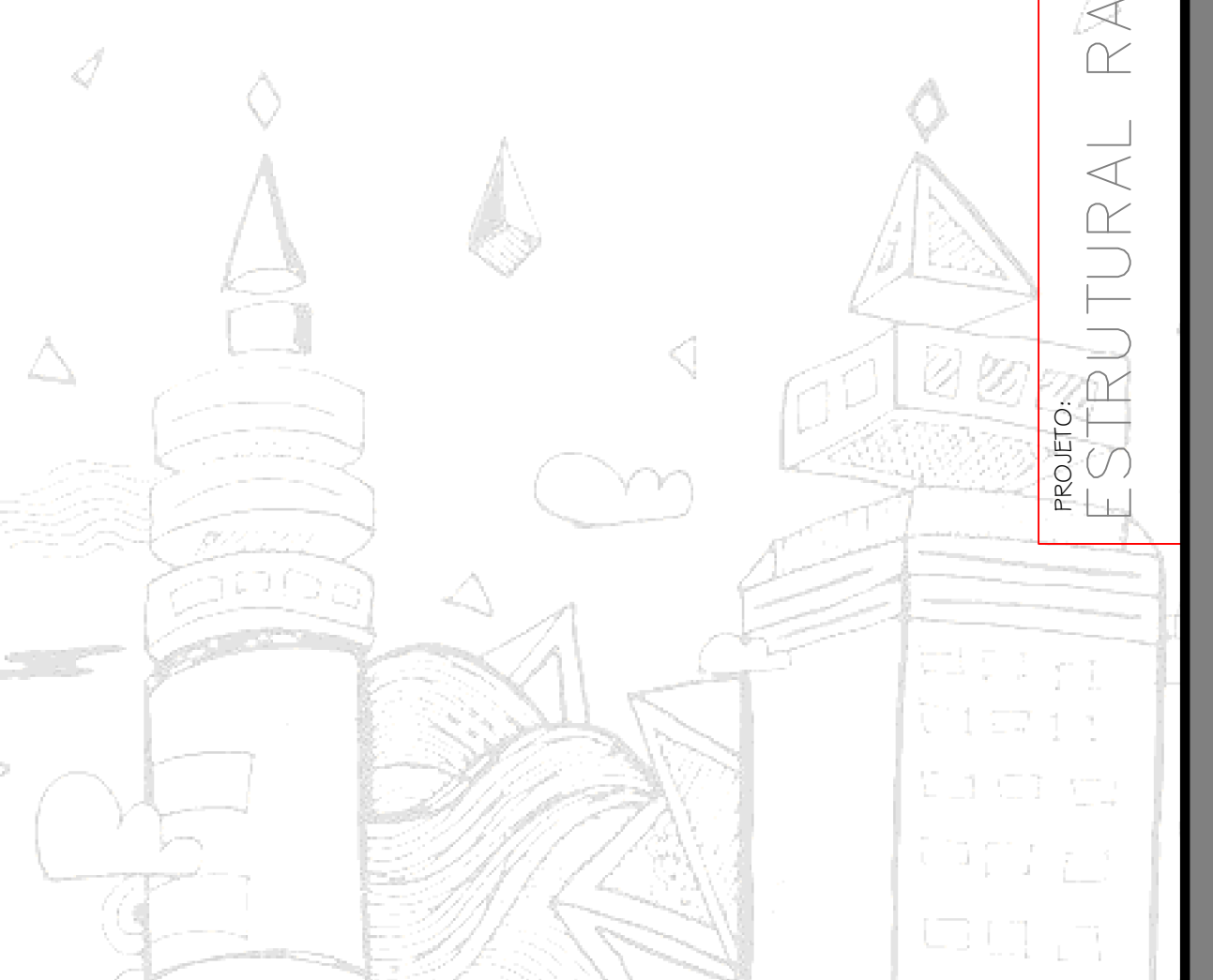


Relação do aço						Resumo do aço			
AÇO	N	DIAM	Q	UNIT	C.TOTAL	AÇO	DIAM	C.TOTAL	BARRAS
V2	V3	V4	V5	V6	V7	V8	V9	V10	
V11	V12	V13	V14	V15	V16	V17	V18	V19	V20
V21	V22	V23	V24	V25	V26	V27	V28	V29	
CA60	1	5.0	639	112	71568				
CA50	2	8.0	4	313	1252				
	3	8.0	4	314	1256				
	4	8.0	3	279	837				
	5	8.0	8	311	2488				
	6	8.0	4	296	1184				
	7	8.0	3	319	1557				
	8	8.0	3	530	1590				
	9	10.0	2	266	532				
	10	10.0	2	235	470				
	11	10.0	6	392	1572				
	12	10.0	6	282	1692				
	13	10.0	5	540	2700				
	14	10.0	2	255	510				
	15	10.0	4	319	1276				
	16	12.5	2	298	596				
	17	12.5	2	549	1098				
	18	12.5	1	256	256				
	19	12.5	2	601	1202				
	20	12.5	2	550	1100				
	21	12.5	2	593	1186				
	22	12.5	2	283	566				
	23	12.5	2	275	550				
	24	12.5	2	305	610				
	25	12.5	8	706	5648				
	26	12.5	2	716	1432				
	27	12.5	2	285	570				
	28	12.5	2	306	612				
	29	12.5	4	475	1900				
	30	12.5	2	505	1010				
	31	12.5	3	783	2349				
	32	12.5	1	217	217				
	33	12.5	2	775	1550				
	34	12.5	3	328	984				
	35	12.5	1	284	284				
	36	12.5	2	525	1050				
	37	12.5	2	405	810				
	38	12.5	2	551	1102				
	39	16.0	3	347	1041				
	40	16.0	2	796	1592				
	41	16.0	2	793	1586				
	42	16.0	2	331	662				
	43	16.0	2	771	1542				
	44	16.0	6	716	4296				
	45	16.0	2	789	1578				
	46	16.0	2	800	1600				
	47	16.0	2	780	1560				
	48	16.0	2	323	646				
	49	16.0	2	982	1964				
	50	16.0	2	347	694				
	51	16.0	2	1087	2174				
	52	12.5	3	995	2985				

Vol. de concreto total (C-25) = 11.24 m³
 Área de forma total = 140.52 m²

Obs:
 V1 existente

APROVAÇÃO/PREFEITURA



Responsável Técnico

AMPLIAÇÃO ESCOLA MUNICIPAL PROFº NESTOR MARGARIDA
 Rua Tupiniquim - nº35 - Araponginhas - Timbó - SC

CLIC PROJETO
 Engenharia e Arquitetura

Rua Pastor Blümel, 30 - Sala 101 - Edifício Paris - Centro - Timbó - SC
 Cep: 89120-000

Fone / Fax: (47) 3382 6464
 e-mail: clicprojeto@gmail.com

Prefeitura Municipal de Timbó

Data: Janeiro/2016