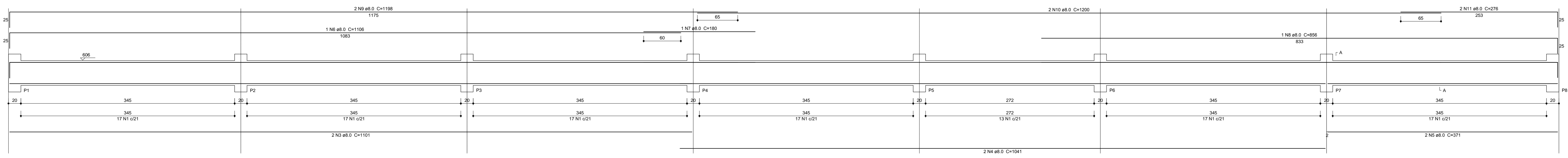
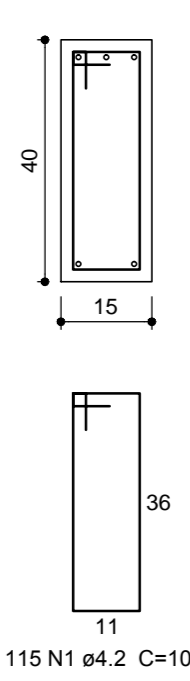


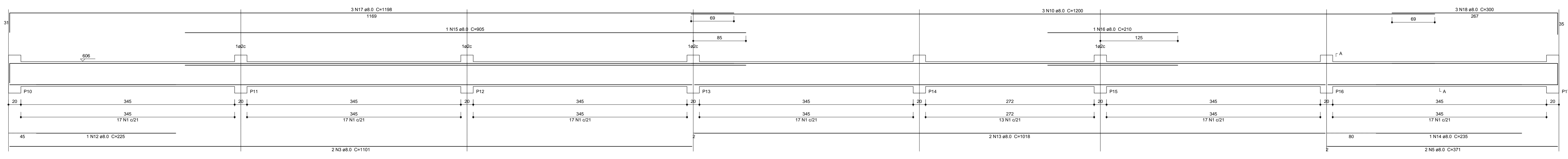
V1
1:25



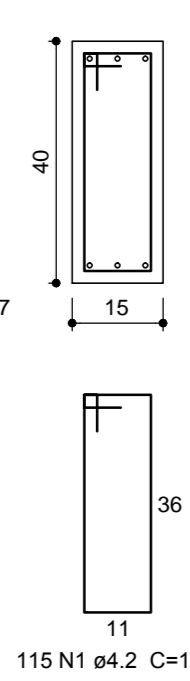
SEÇÃO A-A
ESC 1:12.5



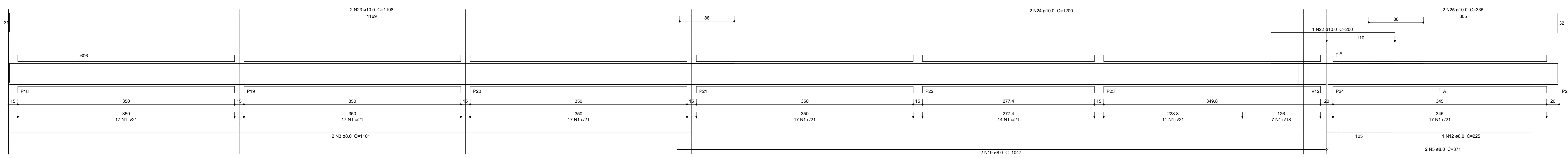
V2
1:25



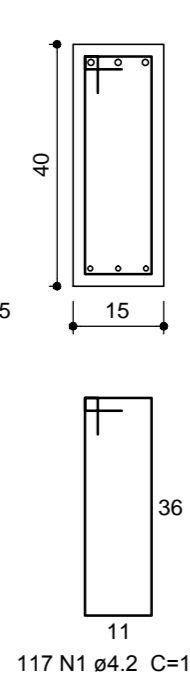
SEÇÃO A-A
ESC 1:12.5



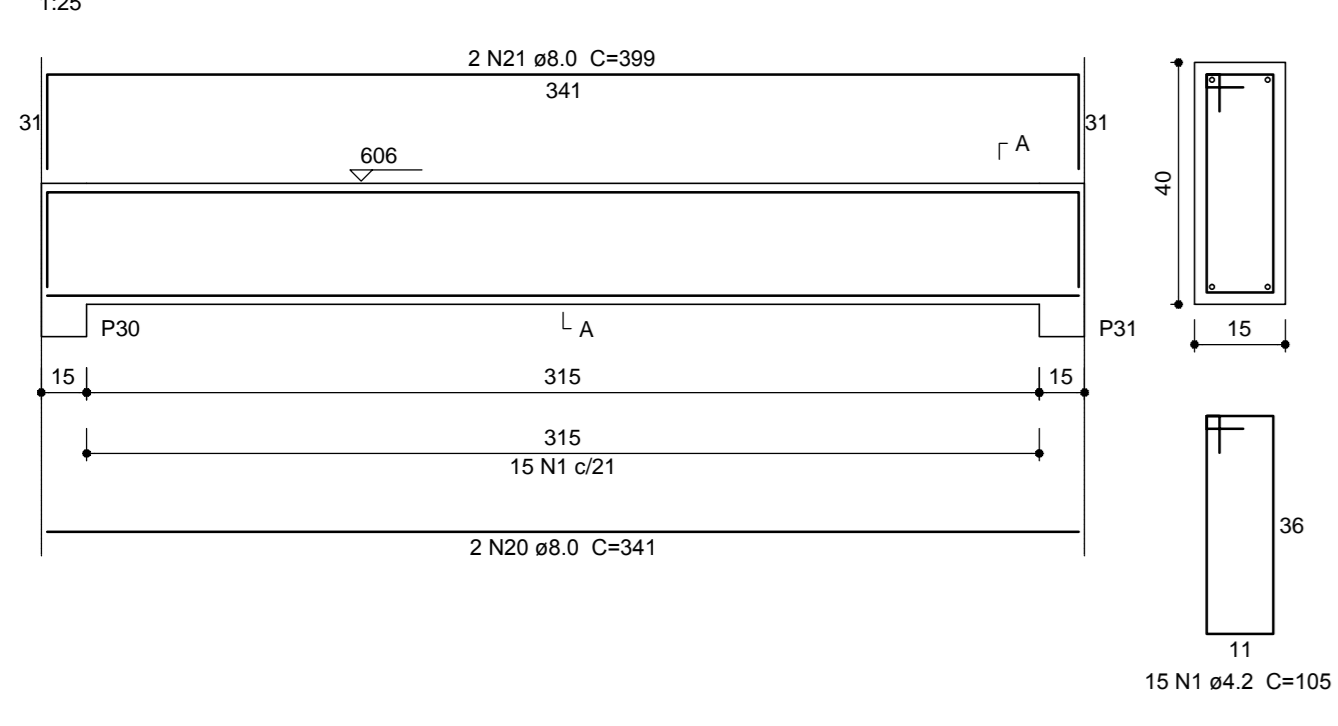
V3
1:25



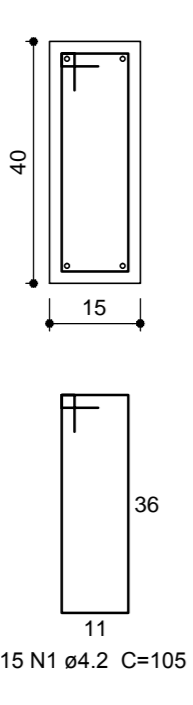
SEÇÃO A-A
ESC 1:12.5



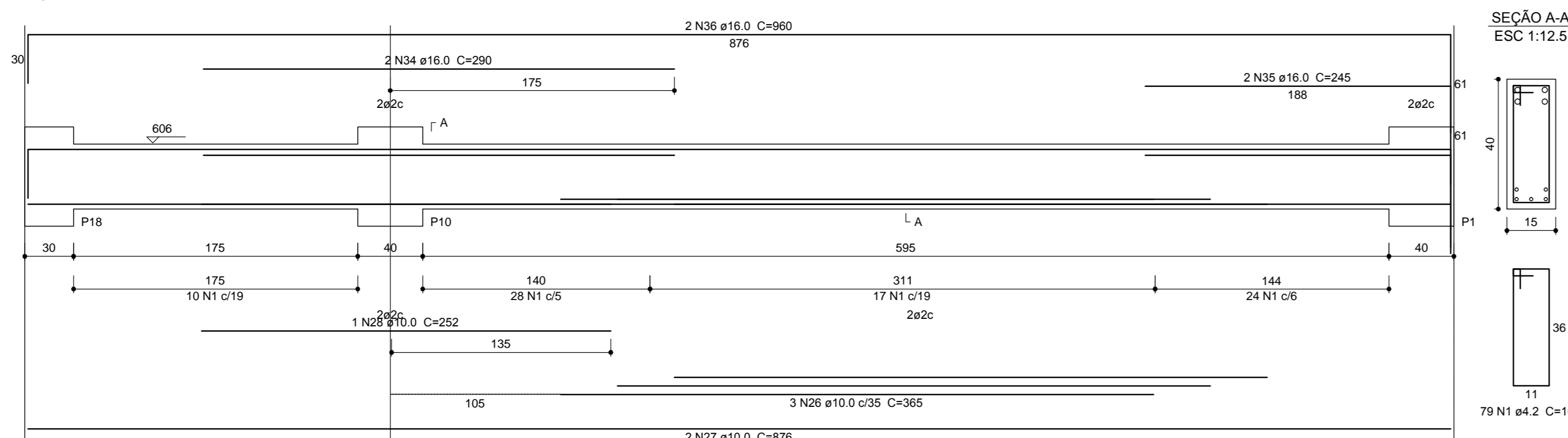
V4
1:25



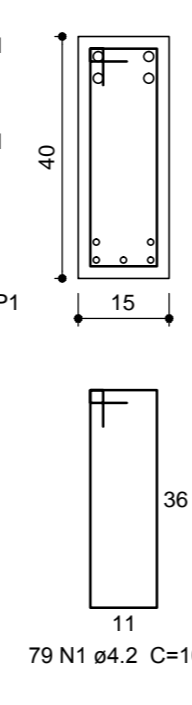
SEÇÃO A-A
ESC 1:12.5



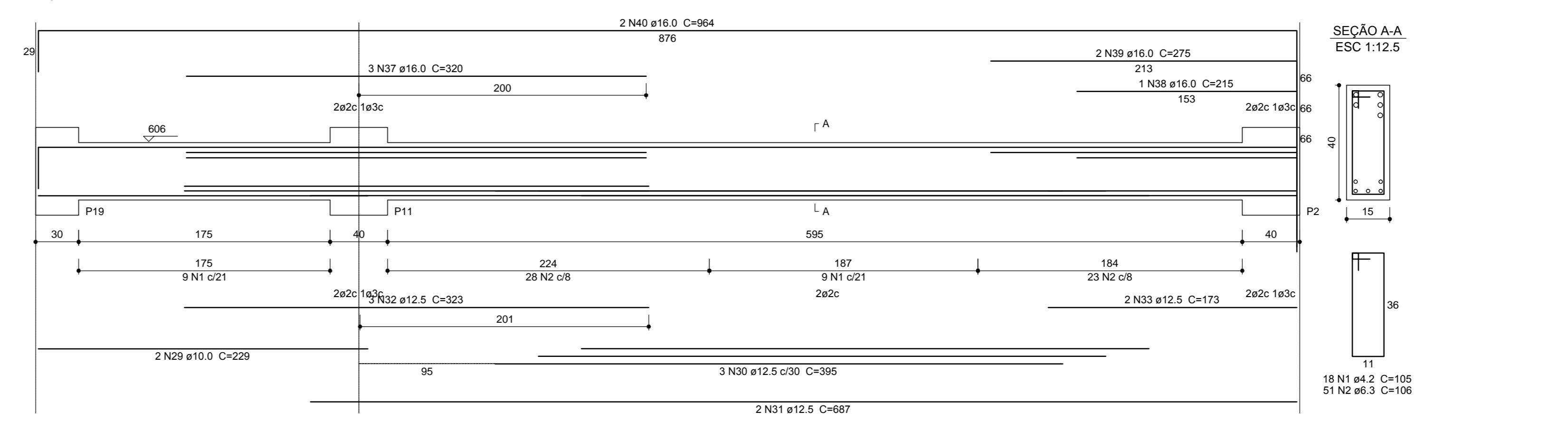
V5
1:25



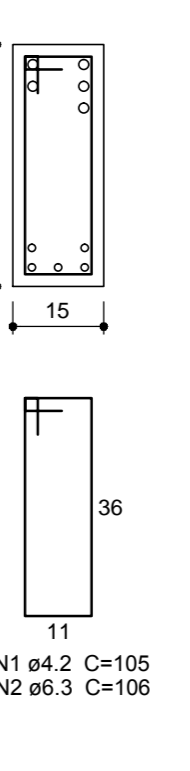
SEÇÃO A-A
ESC 1:12.5



V6
1:25



SEÇÃO A-A
ESC 1:12.5



Relação do aço

ACO	N	DIAM	C.TOTAL	PESO + 10 %
CA50	1	4.2	459	105
CA50	2	6.3	51	106
CA50	3	8.0	6	1101
CA50	4	8.0	2	1041
CA50	5	8.0	6	371
CA50	6	8.0	1	1106
CA50	7	8.0	1	180
CA50	8	8.0	1	856
CA50	9	8.0	2	1198
CA50	10	8.0	5	1200
CA50	11	8.0	2	276
CA50	12	8.0	2	225
CA50	13	8.0	2	1018
CA50	14	8.0	1	235
CA50	15	8.0	1	905
CA50	16	8.0	1	210
CA50	17	8.0	3	1198
CA50	18	8.0	3	300
CA50	19	8.0	2	1047
CA50	20	8.0	2	341
CA50	21	8.0	2	399
CA50	22	10.0	1	200
CA50	23	10.0	2	1198
CA50	24	10.0	2	1200
CA50	25	10.0	2	335
CA50	26	10.0	3	365
CA50	27	10.0	2	876
CA50	28	10.0	1	252
CA50	29	10.0	2	229
CA50	30	12.5	3	395
CA50	31	12.5	2	687
CA50	32	12.5	3	323
CA50	33	12.5	2	173
CA50	34	16.0	2	290
CA50	35	16.0	2	245
CA50	36	16.0	2	960
CA50	37	16.0	3	320
CA50	38	16.0	1	215
CA50	39	16.0	2	275
CA50	40	16.0	2	964
CA50				48195
CA50				5496
CA50				6606
CA50				2082
CA50				2226
CA50				1106
CA50				180
CA50				856
CA50				2396
CA50				6000
CA50				552
CA50				450
CA50				2036
CA50				235
CA50				905
CA50				210
CA50				3594
CA50				900
CA50				2094
CA50				682
CA50				798
CA50				200
CA50				2396
CA50				2400
CA50				670
CA50				1095
CA50				1752
CA50				252
CA50				458
CA50				1185
CA50				1374
CA50				969
CA50				346
CA50				580
CA50				490
CA50				1320
CA50				960
CA50				215
CA50				550
CA50				1928

Resumo do aço

ACO	DIAM	C.TOTAL	PESO + 10 %
CA50	6.3	54.1	14.6
CA50	8.0	339.1	147.2
CA50	10.0	92.3	62.5
CA50	12.5	38.8	41.1
CA50	16.0	66.5	115.3
CA50	4.2	482	57.7
PESO TOTAL			
CA50		380.7	
CA60		57.7	

Vol. de concreto total (C-20) = 5.77 m³
Área de forma total = 91.31 m²

APROVAÇÃO/PREFEITURA



Responsável Técnico

AMPLIAÇÃO DA ESCOLA SÃO ROQUE
RODOVIA RALF KNAESEL
SÃO ROQUE - TIMBÓ - SC

MUNICÍPIO DE TIMBÓ

Rua Pastor Blument, 30 - Sala 101 -
Edifício Paris - Centro - Timbó - SC.
Cep: 89120-000
Fone / Fax: (47) 3382 6464
e-mail: clicprojeto@gmail.com

Data: Novembro/2014

Especificação: **VIGAS - NIVEL 4,09**

Escala: Indicada

Prancha: 11/17

www.clicprojeto.com

Obs: Direitos autorais conforme Lei nº 9.610 de 19.02.1998. Copyright 2014
Criado por PAR PROJETOS DE ENGENHARIA E ARQUITETURA LTDA - CLICPROJETO