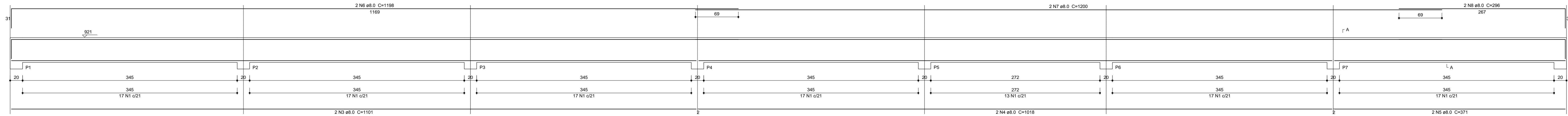
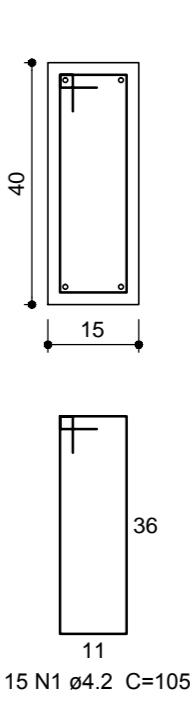


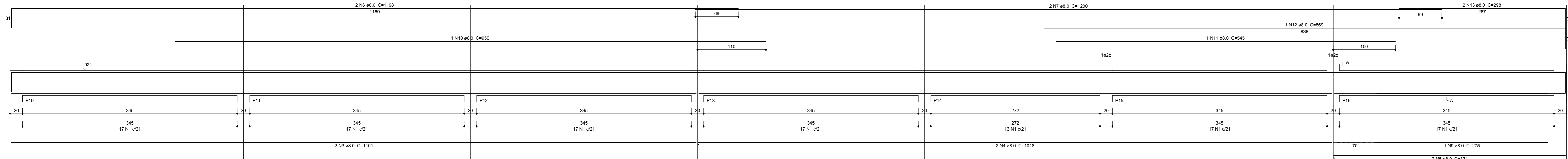
V1
1:25



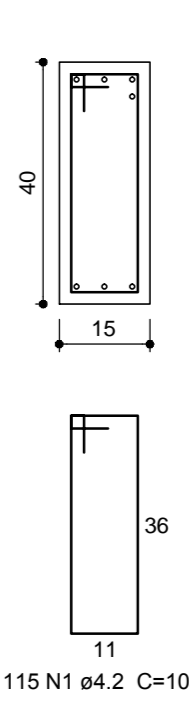
SEÇÃO A-A
ESC 1:12.5



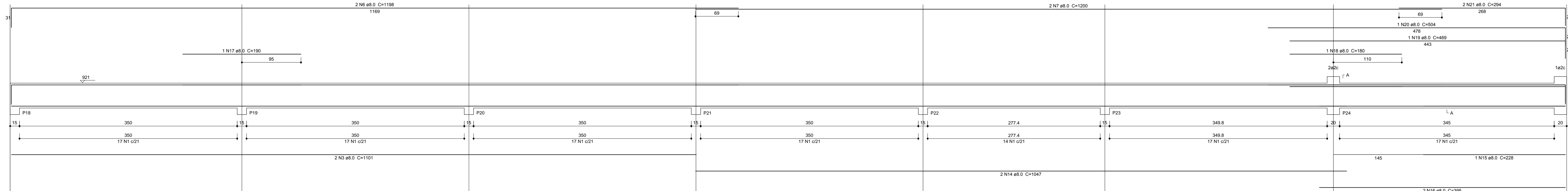
V2
1:25



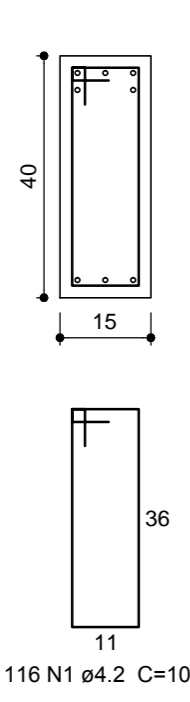
SEÇÃO A-A
ESC 1:12.5



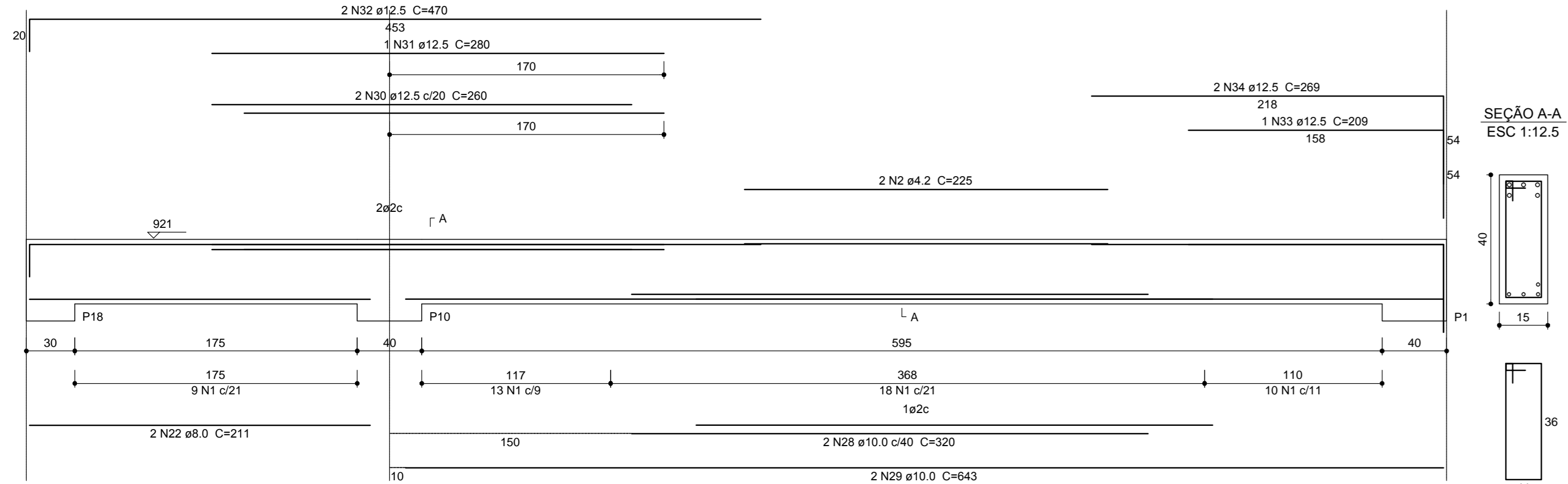
V3
1:25



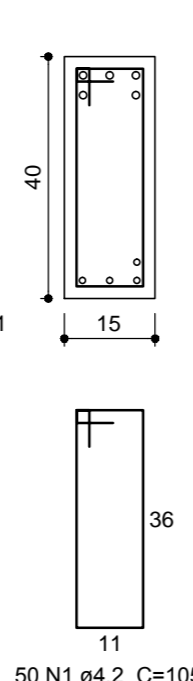
SEÇÃO A-A
ESC 1:12.5



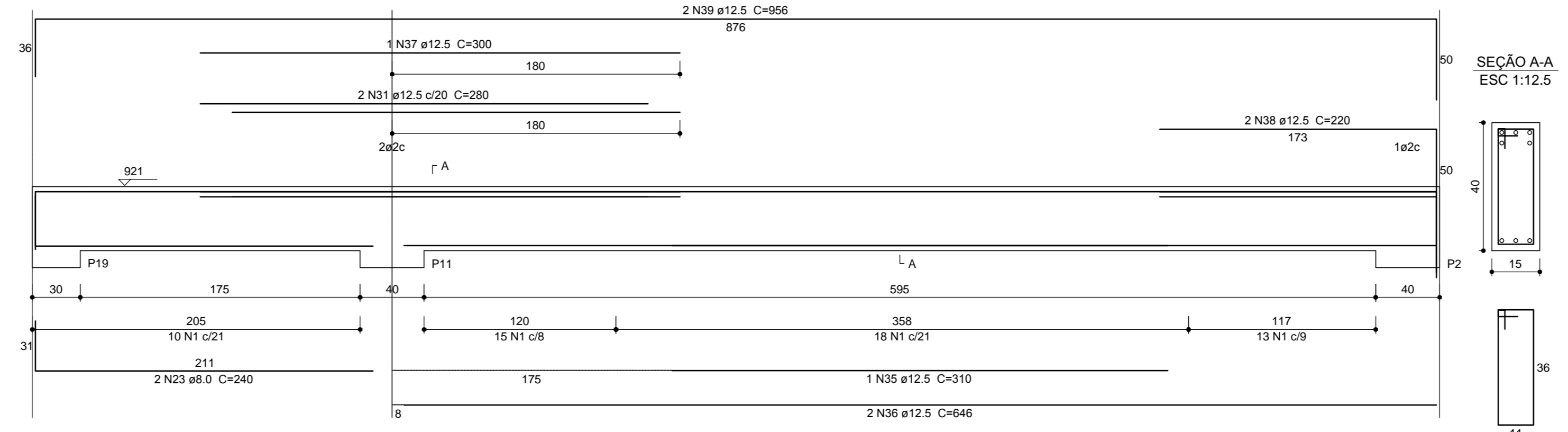
V4
1:25



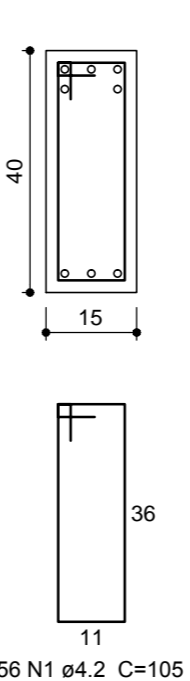
SEÇÃO A-A
ESC 1:12.5



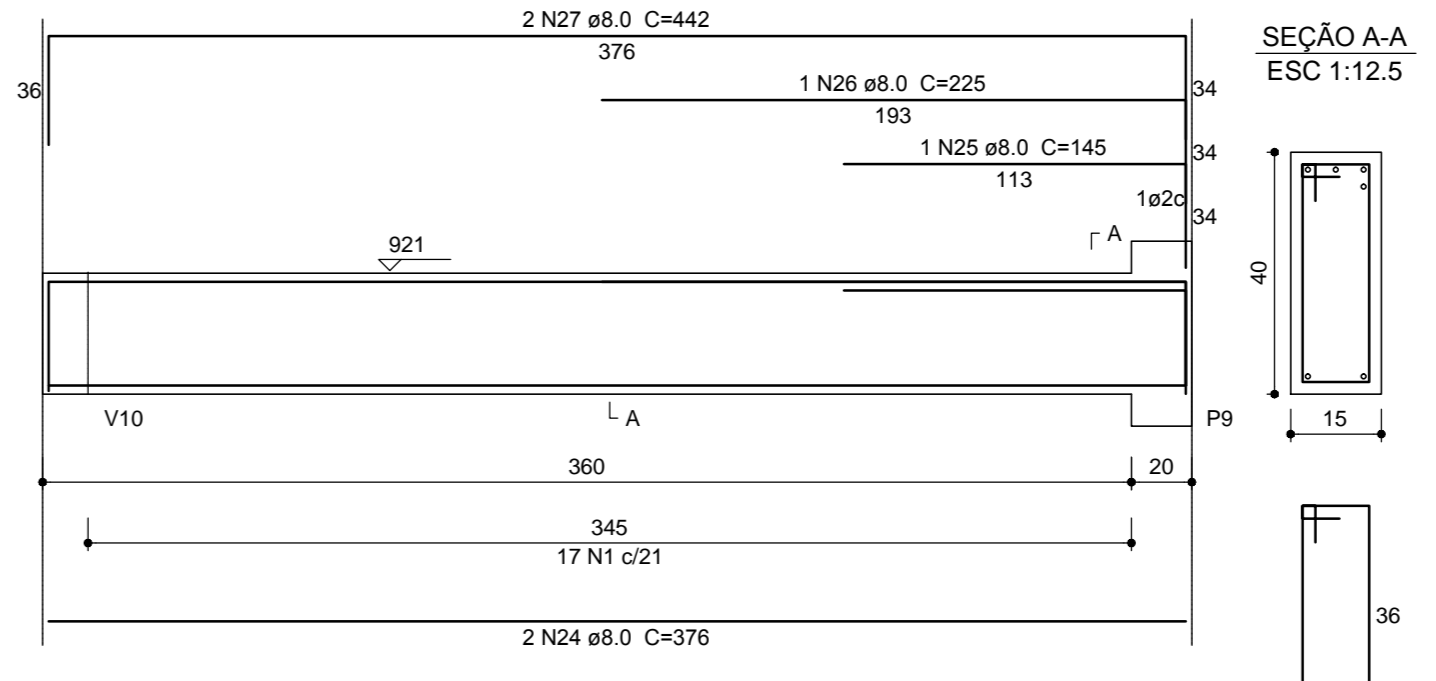
V5
1:25



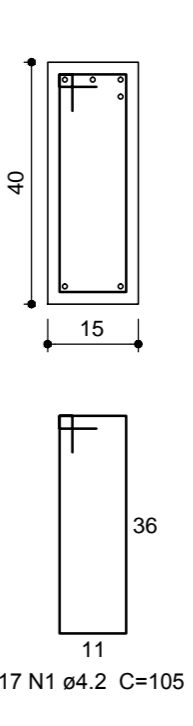
SEÇÃO A-A
ESC 1:12.5



V12
1:25



SEÇÃO A-A
ESC 1:12.5



Relação do aço

CAÇO	N	DIAM	Q	UNIT (cm)	C.TOTAL (cm)
CA60	1	4.2	469	105	49245
CA60	2	4.2	2	225	450
CA60	3	8.0	6	1101	6606
CA60	4	8.0	4	1018	4072
CA60	5	8.0	4	371	1484
CA60	6	8.0	6	1198	7188
CA60	7	8.0	6	1200	7200
CA60	8	8.0	2	296	592
CA60	9	8.0	1	275	275
CA60	10	8.0	1	950	950
CA60	11	8.0	1	545	545
CA60	12	8.0	1	869	869
CA60	13	8.0	2	298	596
CA60	14	8.0	2	1047	2094
CA60	15	8.0	1	228	228
CA60	16	8.0	2	395	790
CA60	17	8.0	1	190	190
CA60	18	8.0	1	180	180
CA60	19	8.0	1	469	469
CA60	20	8.0	1	504	504
CA60	21	8.0	2	294	588
CA60	22	8.0	2	211	422
CA60	23	8.0	2	240	480
CA60	24	8.0	2	376	752
CA60	25	8.0	1	145	145
CA60	26	8.0	1	225	225
CA60	27	8.0	2	442	884
CA60	28	10.0	2	320	640
CA60	29	10.0	2	643	1286
CA60	30	12.5	2	260	520
CA60	31	12.5	3	280	840
CA60	32	12.5	2	470	940
CA60	33	12.5	1	209	209
CA60	34	12.5	2	269	538
CA60	35	12.5	1	310	310
CA60	36	12.5	2	646	1292
CA60	37	12.5	1	300	300
CA60	38	12.5	2	220	440
CA60	39	12.5	2	956	1912

Resumo do aço

CAÇO	DIAM	C.TOTAL (m)	PESO + 10% (kg)
CA50	8.0	383.3	166.4
CA50	10.0	19.3	13.1
CA50	12.5	73.1	77.4
CA60	4.2	497	59.5
PESO TOTAL			
CA50		256.8	
CA60		59.5	

Vol. de concreto total (C-20) = 5.79 m³
Área de forma total = 91.64 m²

APROVAÇÃO/PREFEITURA

ESTRUTURAL

PROJETO:

Responsável Técnico

AMPLIAÇÃO DA ESCOLA SÃO ROQUE
RODOVIA RÁF KNAESEL
SÃO ROQUE - TIMBÓ - SC

CLIC PROJETO

Rua Pastor Blümel, 30 - Sala 101 - Edifício Paris - Centro - Timbó - SC. Cep: 89120-000
Fone / Fax: (47) 3382 6464
e-mail: clicprojeto@gmail.com

MUNICÍPIO DE TIMBÓ

Data: Novembro/2014 Área: x-x

Especificação: **VIGAS - COBERTURA** Escala: Indcada Prancha: 15/17

www.clicprojeto.com

Obs: Direitos autorais conforme Lei nº 9.610 de 19.02.1998. Copyright 2014. Criado por PAR PROJETOS DE ENGENHARIA E ARQUITETURA LTDA. / CLICPROJETO