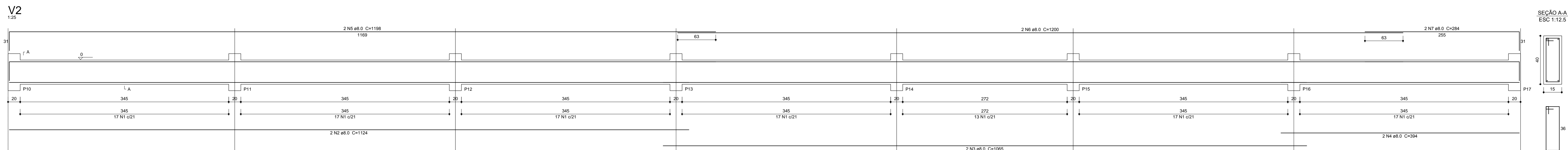
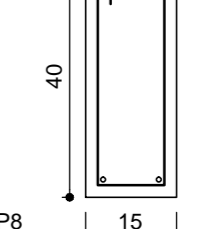
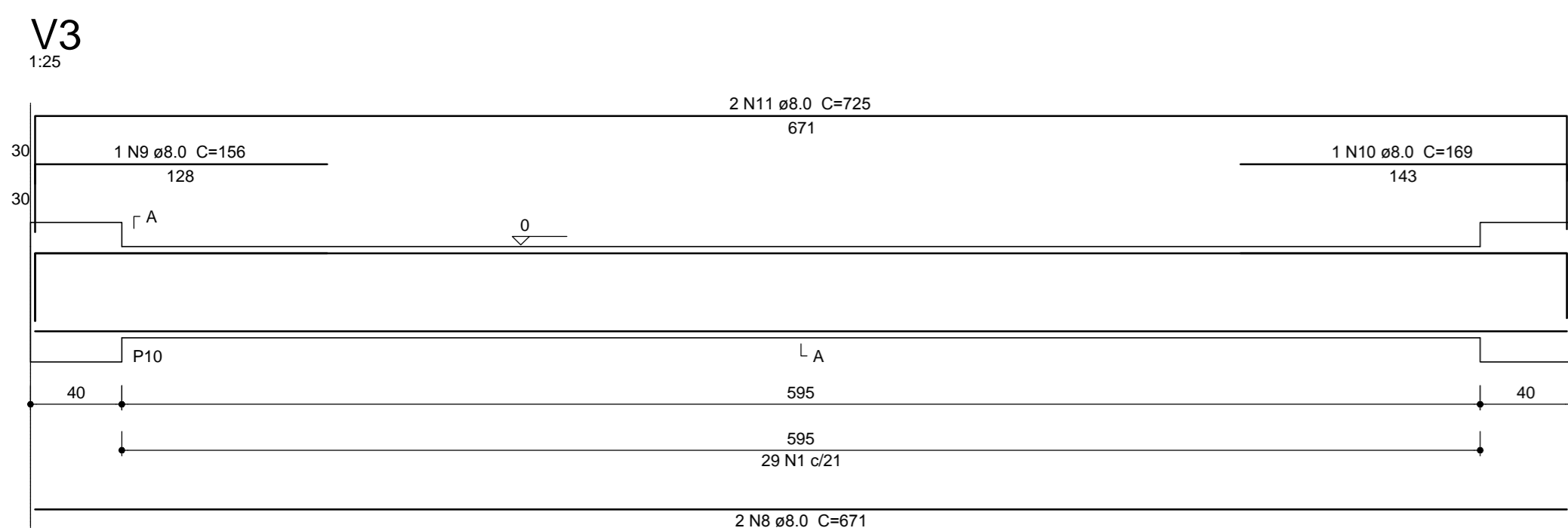
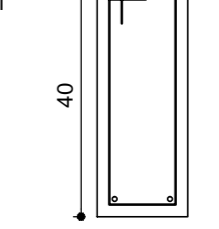


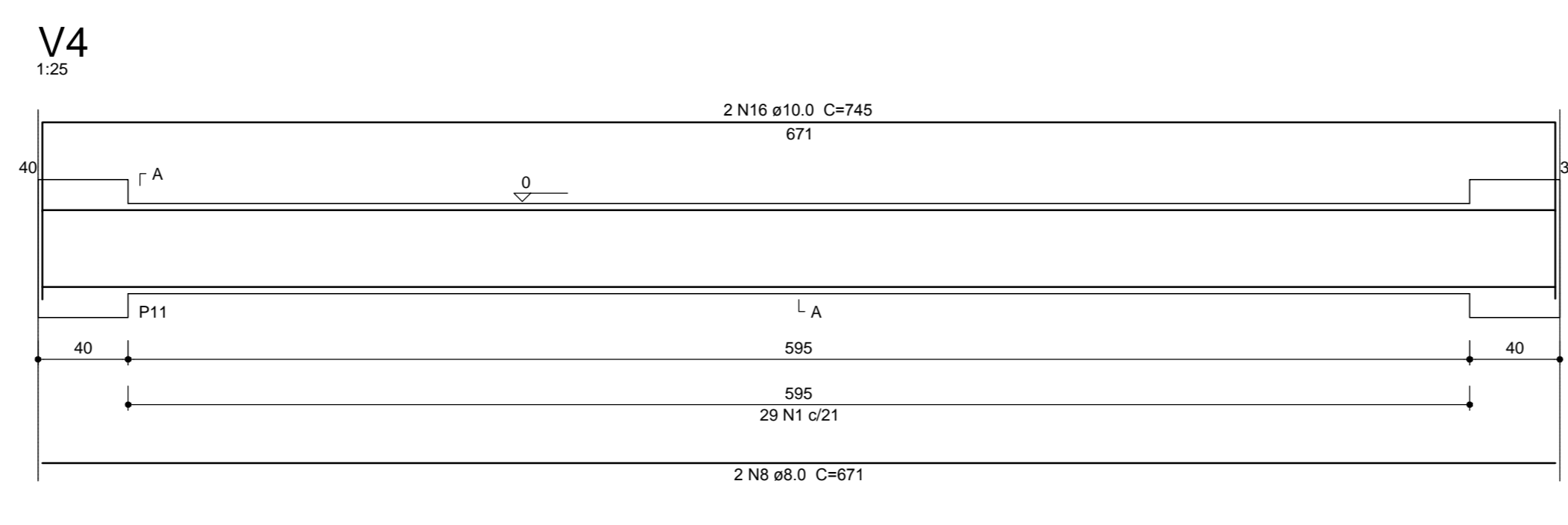
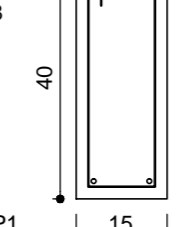
SEÇÃO A-A
ESC 1:12.5



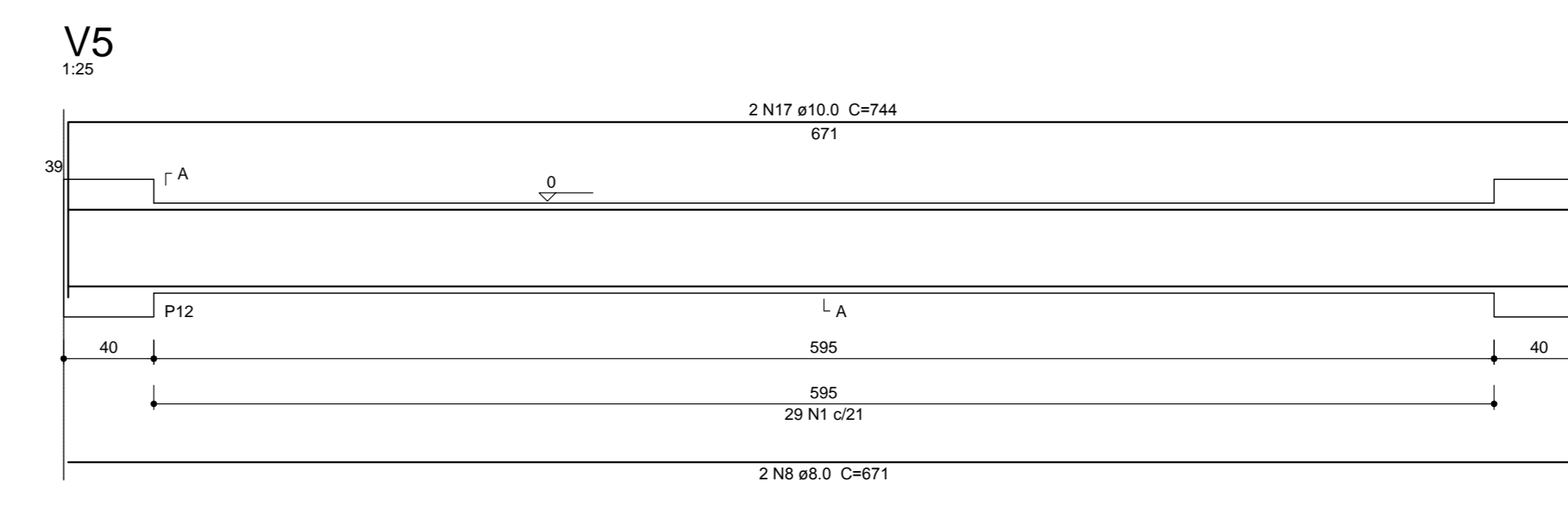
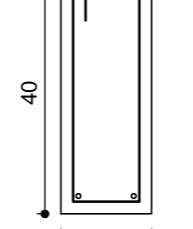
SEÇÃO A-A
ESC 1:12.5



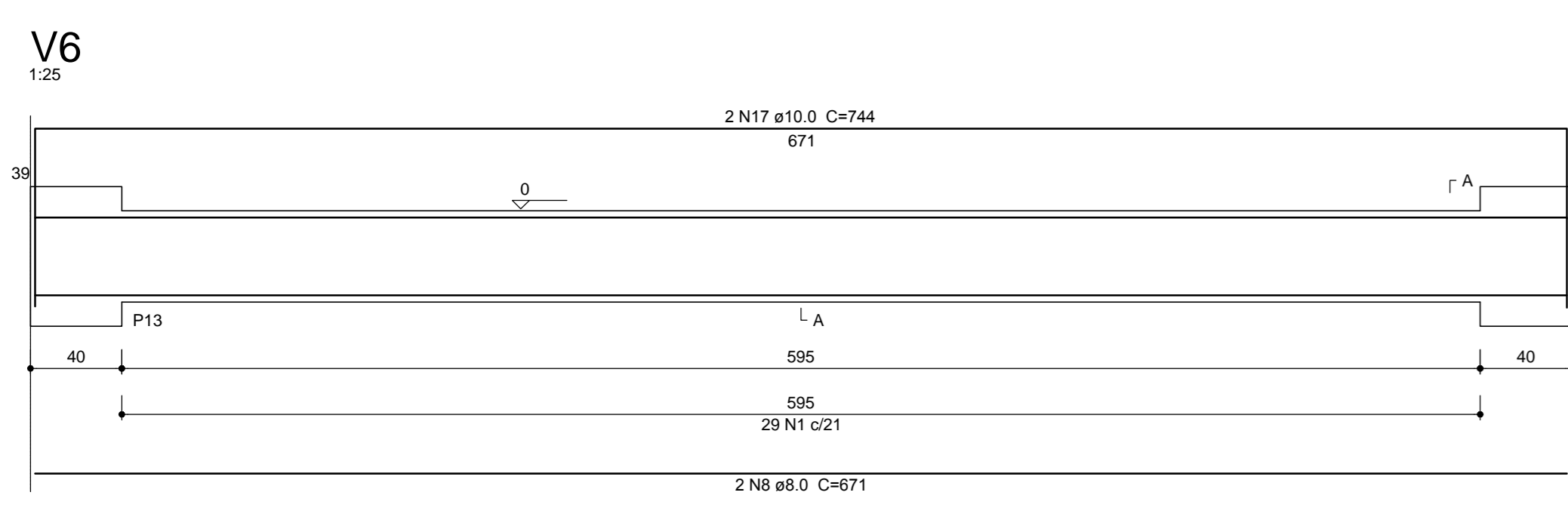
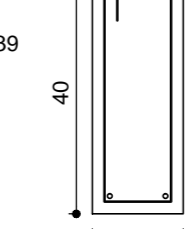
SEÇÃO A-A
ESC 1:12.5



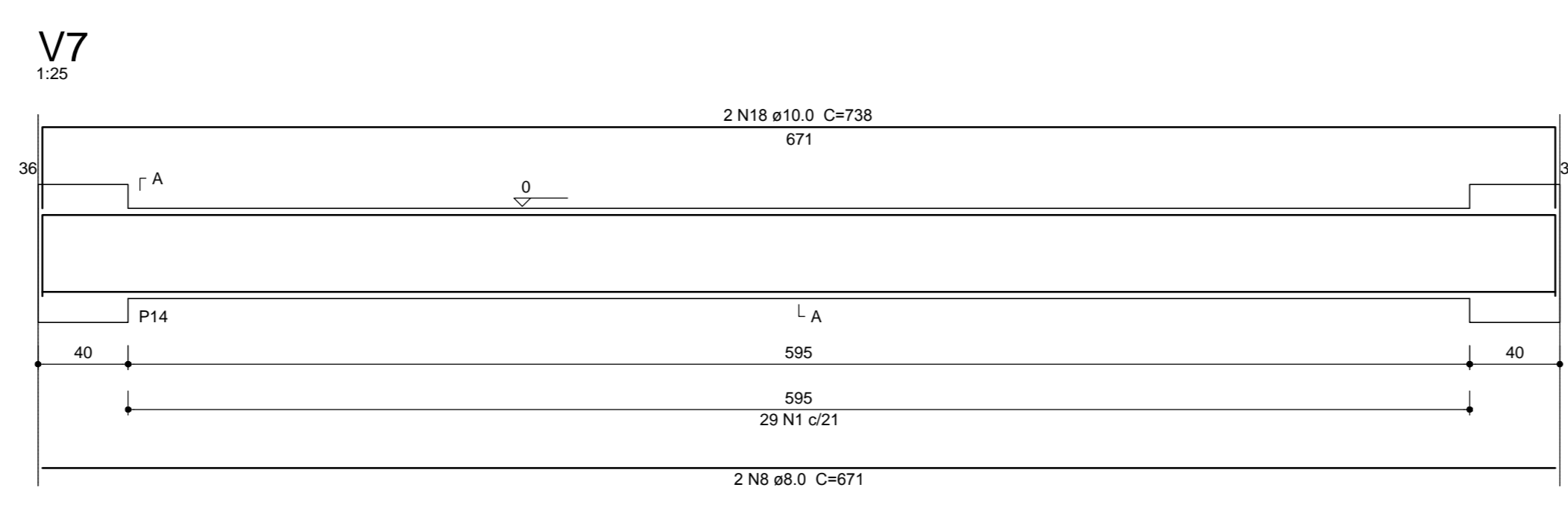
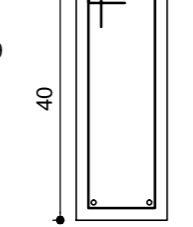
SEÇÃO A-A
ESC 1:12.5



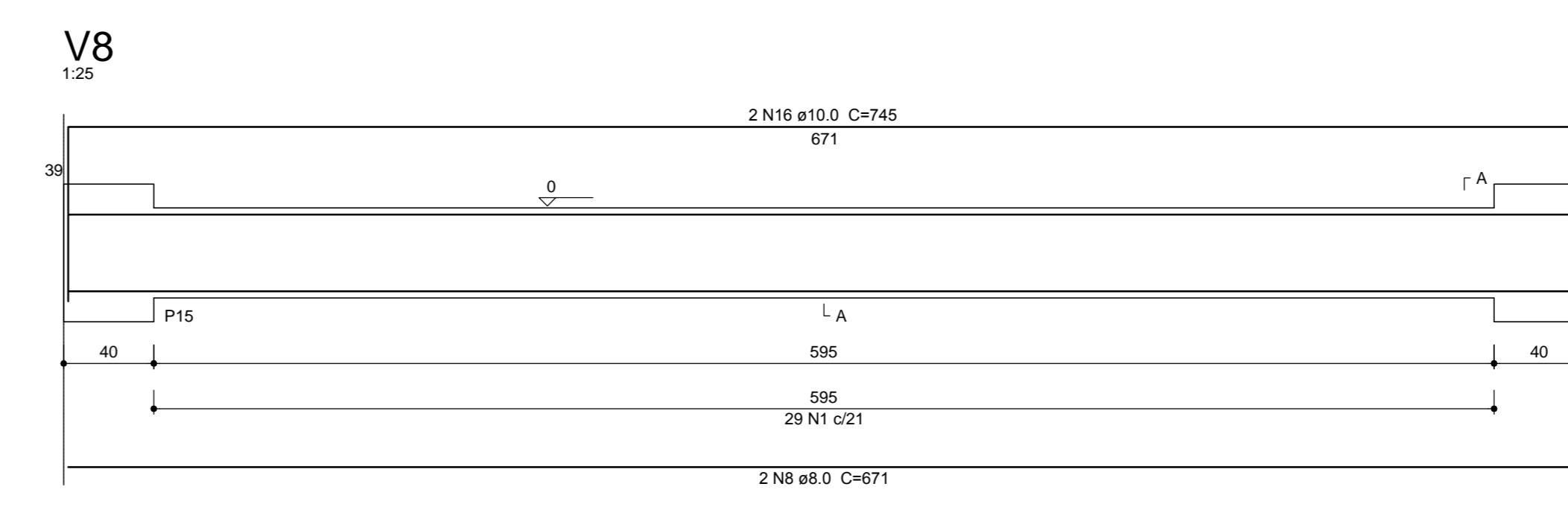
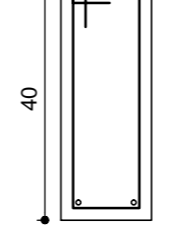
SEÇÃO A-A
ESC 1:12.5



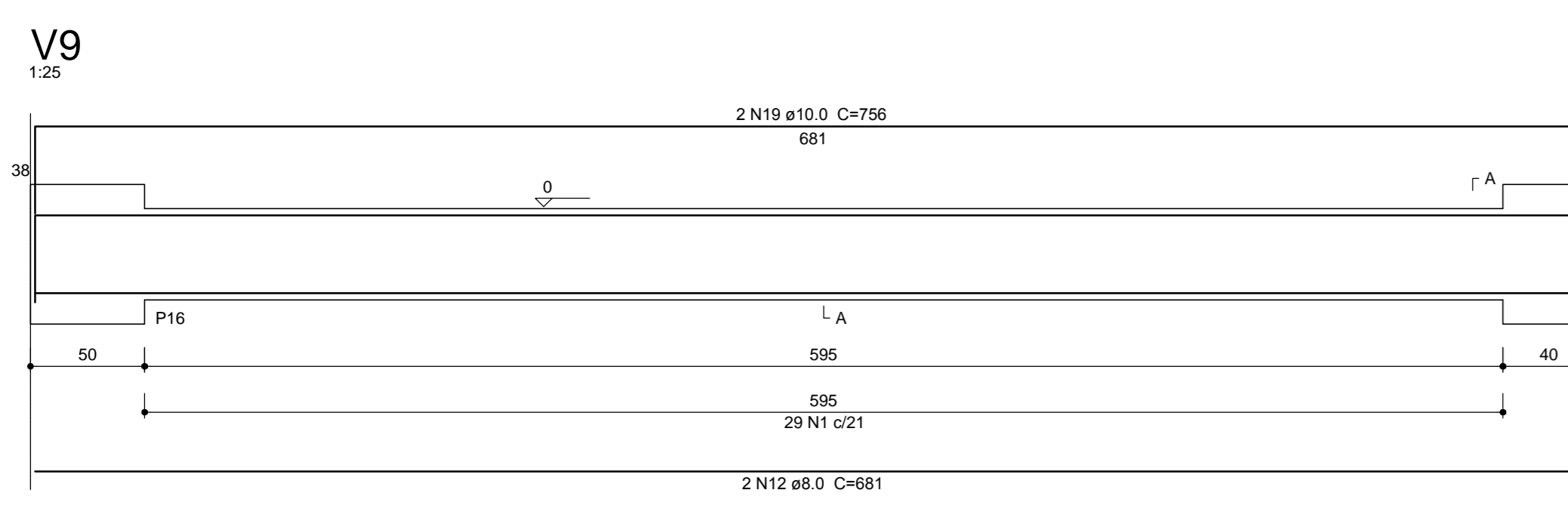
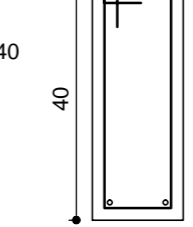
SEÇÃO A-A
ESC 1:12.5



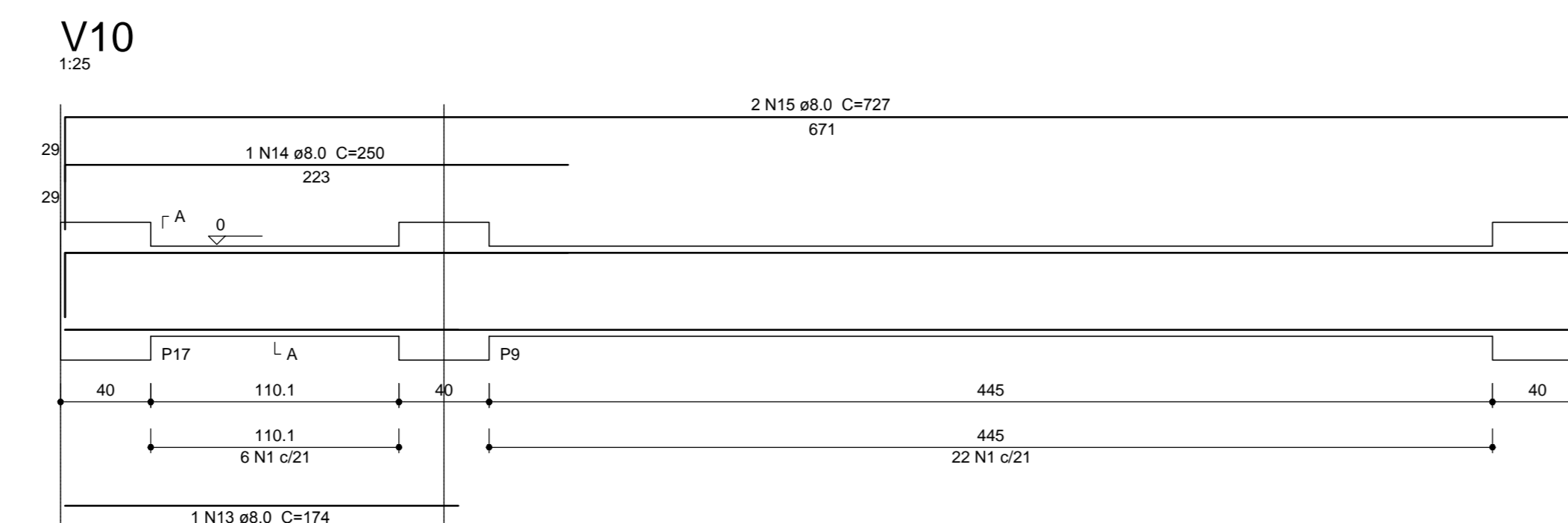
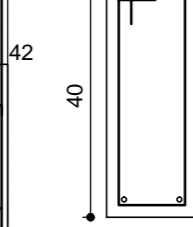
SEÇÃO A-A
ESC 1:12.5



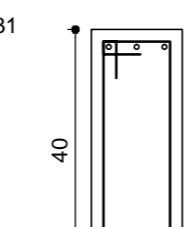
SEÇÃO A-A
ESC 1:12.5



SEÇÃO A-A
ESC 1:12.5



SEÇÃO A-A
ESC 1:12.5



Relação do aço

| ACO | N | DIAM | Q | UNIT (cm) | C.TOTAL (cm) |
|------|----|------|-----|-----------|--------------|
| CA60 | 1 | 8.0 | 461 | 105 | 48405 |
| CA60 | 2 | 8.0 | 4 | 1124 | 4496 |
| CA60 | 3 | 8.0 | 4 | 1065 | 4260 |
| CA60 | 4 | 8.0 | 4 | 394 | 1576 |
| CA60 | 5 | 8.0 | 4 | 1198 | 4752 |
| CA60 | 6 | 8.0 | 4 | 1200 | 4800 |
| CA60 | 7 | 8.0 | 4 | 284 | 1136 |
| CA60 | 8 | 8.0 | 14 | 671 | 9394 |
| CA60 | 9 | 8.0 | 1 | 156 | 156 |
| CA60 | 10 | 8.0 | 1 | 169 | 169 |
| CA60 | 11 | 8.0 | 2 | 725 | 1450 |
| CA60 | 12 | 8.0 | 2 | 681 | 1362 |
| CA60 | 13 | 8.0 | 1 | 174 | 174 |
| CA60 | 14 | 8.0 | 1 | 250 | 250 |
| CA60 | 15 | 8.0 | 2 | 727 | 1454 |
| CA60 | 16 | 10.0 | 4 | 745 | 2980 |
| CA60 | 17 | 10.0 | 4 | 744 | 2976 |
| CA60 | 18 | 10.0 | 2 | 738 | 1476 |
| CA60 | 19 | 10.0 | 2 | 756 | 1512 |

Resumo do aço

| ACO | DIAM | C.TOTAL (m) | PESO + 10% (kg) |
|------------|------|-------------|-----------------|
| CA60 | 8.0 | 354.7 | 154 |
| CA60 | 10.0 | 89.5 | 60.7 |
| CA60 | 4.2 | 484.1 | 57.9 |
| PESO TOTAL | | | |
| CA60 | | 214.6 | 57.9 |

Vol. de concreto total (C-20) = 6.25 m³
Área de forma total = 98.93 m²

APROVAÇÃO/PREFEITURA

ESTRUTURAL

PROJETO:

Responsável Técnico

AMPLIAÇÃO DA ESCOLA SÃO ROQUE
RODOVIA RALF KNÄESEL
SÃO ROQUE - TIMBÓ - SC

MUNICÍPIO DE TIMBÓ

Rua Pastor Blümel, 30 - Sala 101 - Edifício Paris - Centro - Timbó - SC. Cep: 89120-000
Fone / Fax: (47) 3382 6464
e-mail: clicprojeto@gmail.com

Data: Novembro/2014

Área: x-x

Especificação: VIGAS BALDRAMES - NIVEL -1,97

Escala: Indicada

Prancha: 04/17

www.clicprojeto.com

Obs: Direitos autorais conforme Lei nº 9.610 de 19.02.1998. Copyright 2014. Criado por PAR PROJETOS DE ENGENHARIA E ARQUITETURA LTDA. / CLICPROJETO