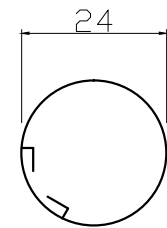
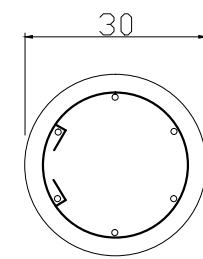
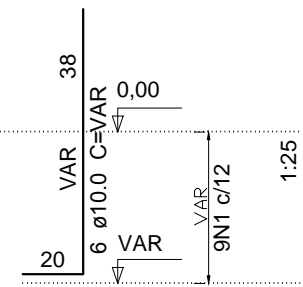


P1

baldrame
ESC 1:12.5

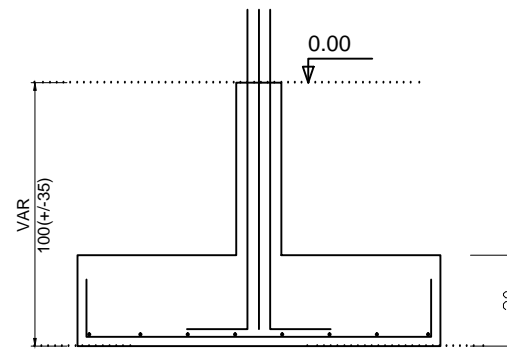
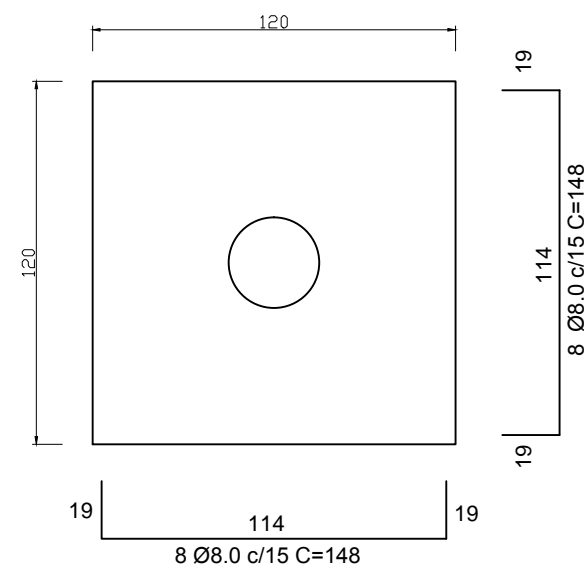


9 N1 ϕ 5.0 C=100



S1

ESC 1:25

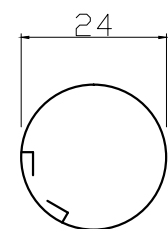
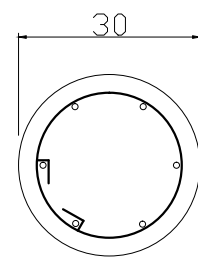


Solo compactado sobre a sapata
peso específico > 1600.00 kgf/m³

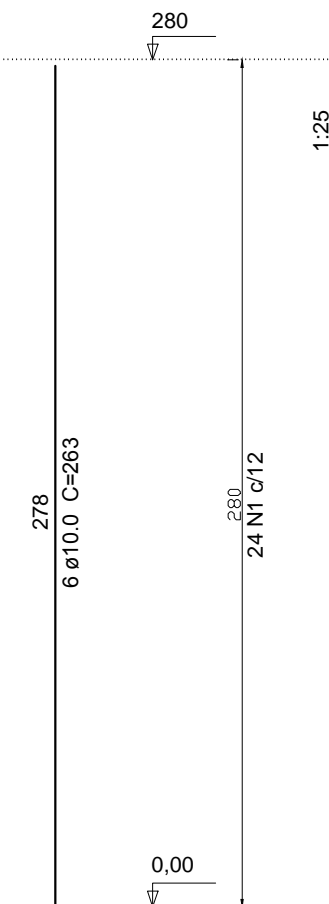
P1

cobertura

ESC 1:12.5



9 N1 ϕ 5.0 C=100



Características dos materiais

Elemento	fck (kgf/cm ²)	Ecs (kgf/cm ²)
Pilares	250	238000
Sapatas	250	238000



**PREFEITURA
DE TIMBÓ**

**SECRETARIA MUNICIPAL
DE PLANEJAMENTO**

Obra:

CHURRASQUEIRA JARDIM BOTÂNICO

Endereço:

Acesso Estadual 477-A - Timbó - SC

Projeto:

**ESTRUTURAL - CHURRASQUEIRAS
ARMAÇÃO SAPATA E PILAR CENTRAL**

Resp. Técnico Projeto:

Data:

NOV./2019

Escala:

INDICADA

Área:

16,81m²

Prancha:

EST.P2.01