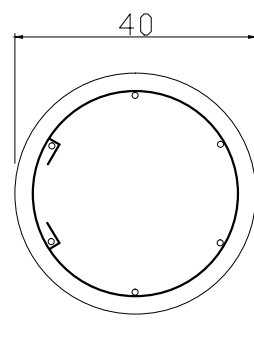


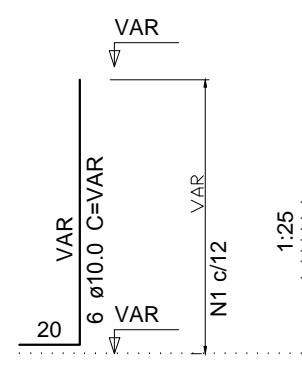
Planta de locação
escala 1:75

Características dos materiais		
Elemento	fck (kgf/cm ²)	Ecs (kgf/cm ²)
Vigas	250	238000
Pilares	250	238000
Lajes	200	212874

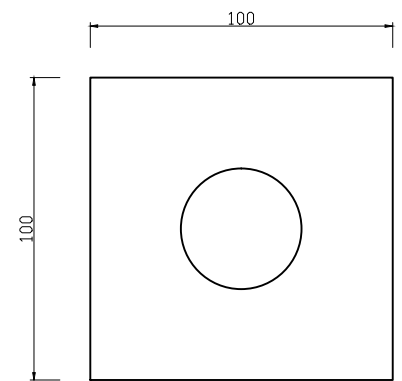
P1=P2=P5=P6=P7=P8



N1 ø5.0 C=100

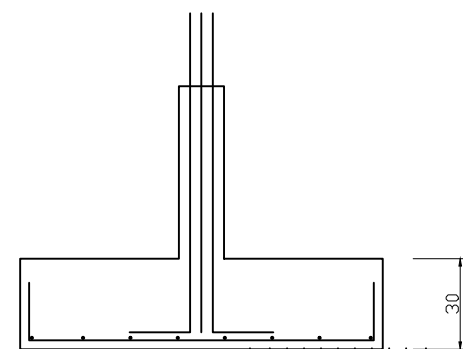
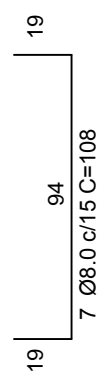


S1=S2=S5=S6=S7=S8



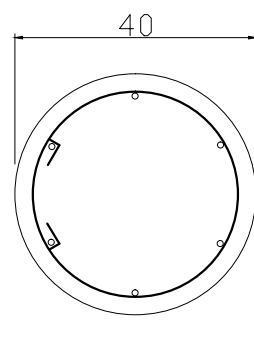
7 Ø8.0 c/15 C=108

Solo compactado sobre a sapata
peso específico > 1600.00 kgf/m³

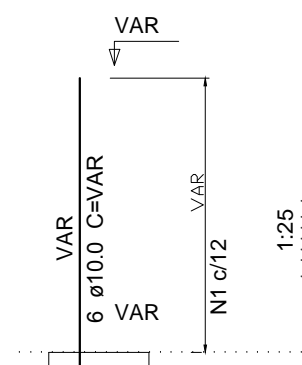


Solo compactado sobre a sapata
peso específico > 1600.00 kgf/m³

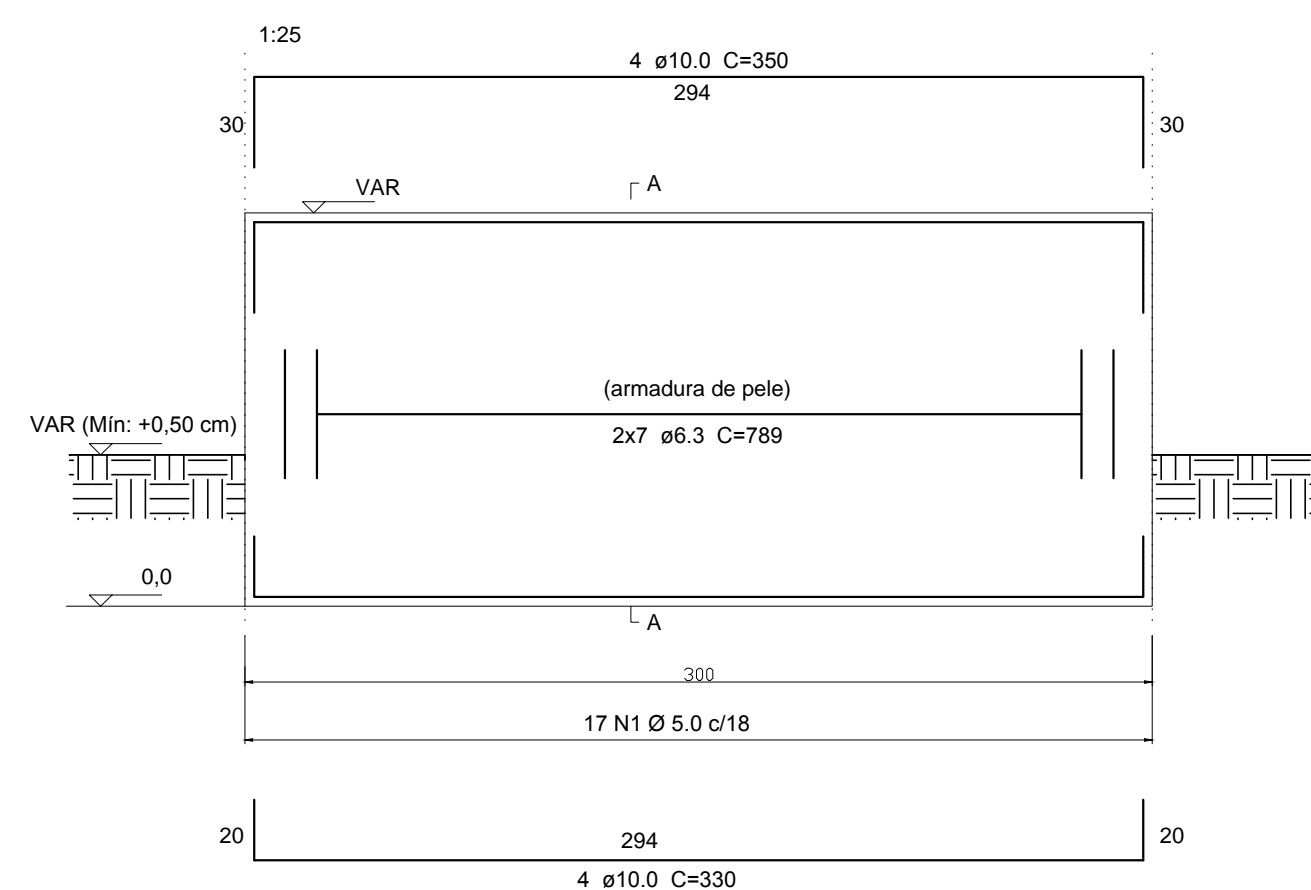
P3=P4



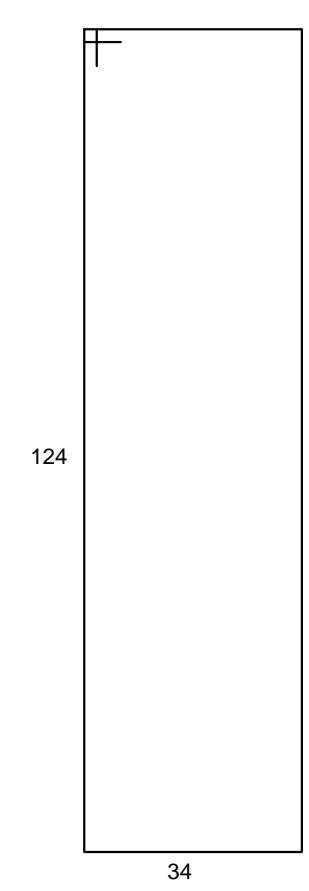
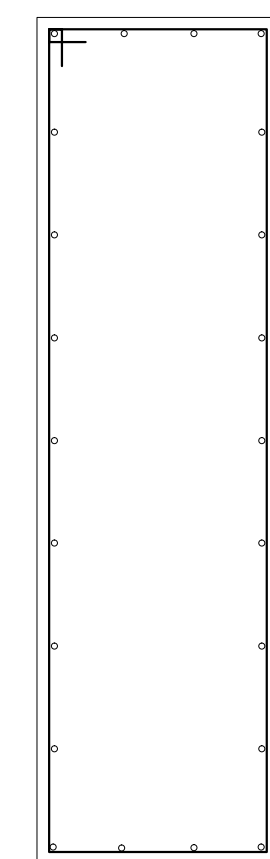
N1 ø5.0 C=100



BASE DE APOIO EM CONCRETO 1,30X0,40



SEÇÃO A-A
ESC 1:12,5



Carimbos:



**PREFEITURA
DE TIMBÓ**

**SECRETARIA MUNICIPAL
DE PLANEJAMENTO**

Obra: PONTE JARDIM BOTÂNICO			
Endereço: Acesso Estadual 477-A - Timbó - SC			
Projeto: ESTRUTURAL - PONTE LOCAÇÃO E ARMAÇÃO			
Resp. Técnico Projeto:			
Data: NOV./2019	Escala: INDICADA	Área: 55,67m²	Prancha: EST.P3.01